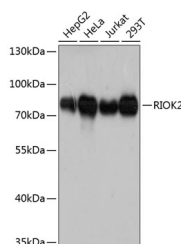


RIOK2 Polyclonal Antibody

Catalog No.	E-AB-63629	Reactivity	H
Storage	Store at -20°C. Avoid freeze / thaw cycles.	Host	Rabbit
Applications	WB	Isotype	IgG

Note: Centrifuge before opening to ensure complete recovery of vial contents.

Images



Western blot analysis of extracts of various cell lines using R1OK2 Polyclonal Antibody at dilution of 1:3000.

Immunogen Information

Immunogen	Recombinant fusion protein of human R1OK2 (NP_060813.2).
GeneID	55781
Swissprot	Q9BVS4
Synonyms	R1OK2,R1O2

Product Information

Calculated MW	54kDa/63kDa
Observed MW	80kDa
Buffer	PBS with 0.02% sodium azide, 50% glycerol, pH7.3.
Purify	Affinity purification
Dilution	WB 1:500-1:2000

Background

R1OK2 (RIO Kinase 2) is a Protein Coding gene. Diseases associated with R1OK2 include Cecum Carcinoma and Cecum Adenocarcinoma. Among its related pathways are rRNA processing in the nucleus and cytosol and Gene Expression. Gene Ontology (GO) annotations related to this gene include transferase activity, transferring phosphorus-containing groups and phosphotransferase activity, alcohol group as acceptor. An important paralog of this gene is R1OK1.

For Research Use Only

Thank you for your recent purchase.
 If you would like to learn more about antibodies, please visit www.elabscience.com.

**Focus on your research
 Service for life science**

Applications: WB-Western Blot IHC-Immunohistochemistry IF-Immunofluorescence IP-Immunoprecipitation FC-Flow cytometry ChIP-Chromatin Immunoprecipitation Reactivity: H-Human R-Rat M-Mouse Mk-Monkey Dg-Dog Ch-Chicken Hm-Hamster Rb-Rabbit Sh-Sheep Pg-Pig Z-Zebrafish X-Xenopus C-Cow.