

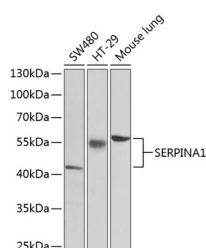
## SERPINA1 Polyclonal Antibody

**Catalog No.** E-AB-64199  
**Storage** Store at -20°C. Avoid freeze / thaw cycles.  
**Applications** WB,IF

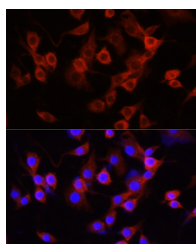
**Reactivity** H,M,R  
**Host** Rabbit  
**Isotype** IgG

**Note:** Centrifuge before opening to ensure complete recovery of vial contents.

### Images



Western blot analysis of extracts of various cell lines using Alpha-1 Antitrypsin (Alpha-1 Antitrypsin (SERPINA1)) Polyclonal Antibody at 1:1000 dilution.



Immunofluorescence analysis of PC-12 cells using Alpha-1 Antitrypsin (Alpha-1 Antitrypsin (SERPINA1)) Polyclonal Antibody at dilution of 1:100 (40x lens). Blue: DAPI for nuclear staining.

### Immunogen Information

**Immunogen** Recombinant fusion protein of human SERPINA1  
**GeneID** 5265  
**Swissprot** P01009  
**Synonyms** SERPINA1,A1A,A1AT,AAT,PI,PII,PRO2275,alpha 1AT

### Product Information

**Calculated MW** 34kDa/40kDa/46kDa  
**Observed MW** 45kDa,50kDa  
**Buffer** PBS with 0.02% sodium azide,50% glycerol,pH7.3.  
**Purify** Affinity purification  
**Dilution** WB 1:500-1:2000,IF 1:50-1:200

### Background

The protein encoded by this gene is secreted and is a serine protease inhibitor whose targets include elastase, plasmin, thrombin, trypsin, chymotrypsin, and plasminogen activator. Defects in this gene can cause emphysema or liver disease. Several transcript variants encoding the same protein have been found for this gene.

### For Research Use Only

Thank you for your recent purchase.  
If you would like to learn more about antibodies, please visit [www.elabscience.com](http://www.elabscience.com).

### Focus on your research Service for life science

Applications:WB-Western Blot IHC-Immunohistochemistry IF-Immunofluorescence IP-Immunoprecipitation FC-Flow cytometry ChIP-Chromatin Immunoprecipitation Reactivity: H-Human R-Rat M-Mouse Mk-Monkey Dg-Dog Ch-Chicken Hm-Hamster Rb-Rabbit Sh-Sheep Pg-Pig Z-Zebrafish X-Xenopus C-Cow.