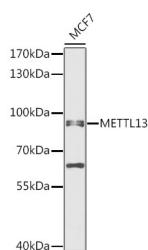


## METTL13 Polyclonal Antibody

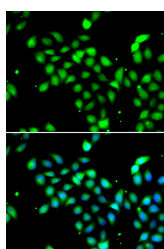
<b>Catalog No.</b>	E-AB-64259	<b>Reactivity</b>	H
<b>Storage</b>	Store at -20°C. Avoid freeze / thaw cycles.	<b>Host</b>	Rabbit
<b>Applications</b>	WB,IF	<b>Isotype</b>	IgG

**Note:** Centrifuge before opening to ensure complete recovery of vial contents.

### Images



Western blot analysis of extracts of MCF7 cells using METTL13 Polyclonal Antibody at 1:1000 dilution.



Immunofluorescence analysis of A549 cells using METTL13 Polyclonal Antibody Blue: DAPI for nuclear staining.

### Immunogen Information

<b>Immunogen</b>	Recombinant fusion protein of human METTL13
<b>GeneID</b>	51603
<b>Swissprot</b>	Q8N6R0
<b>Synonyms</b>	METTL13,5630401D24Rik,CGI-01,KIAA0859,feat

### Product Information

<b>Calculated MW</b>	44kDa/61kDa/68kDa/72kDa/78kDa
<b>Observed MW</b>	85kDa
<b>Buffer</b>	PBS with 0.02% sodium azide,50% glycerol,pH7.3.
<b>Purify</b>	Affinity purification
<b>Dilution</b>	WB 1:500-1:2000,IF 1:50-1:100

### Background

Dual methyltransferase that catalyzes methylation of elongation factor 1-alpha (EEF1A1 and EEF1A2 at two different positions, and is therefore involved in the regulation of mRNA translation. Via its C-terminus, methylates EEF1A1 and EEF1A2 at the N-terminal residue 'Gly-2'. Via its N-terminus dimethylates EEF1A1 and EEF1A2 at residue 'Lys-55'. Has no activity towards core histones H2A, H2B, H3 and H4. Negatively regulates cell proliferation at G1/S transition via transcriptional suppression of cell cycle regulatory genes such as CDK4 and CDK6.

#### For Research Use Only

Thank you for your recent purchase.  
 If you would like to learn more about antibodies, please visit [www.elabscience.com](http://www.elabscience.com).

**Focus on your research**  
**Service for life science**

Applications:WB-Western Blot IHC-Immunohistochemistry IF-Immunofluorescence IP-Immunoprecipitation FC-Flow cytometry ChIP-Chromatin Immunoprecipitation Reactivity: H-Human R-Rat M-Mouse Mk-Monkey Dg-Dog Ch-Chicken Hm-Hamster Rb-Rabbit Sh-Sheep Pg-Pig Z-Zebrafish X-Xenopus C-Cow.