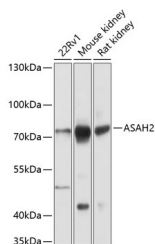


ASAH2 Polyclonal Antibody

Catalog No.	E-AB-64270	Reactivity	H,M,R
Storage	Store at -20°C. Avoid freeze / thaw cycles.	Host	Rabbit
Applications	WB	Isotype	IgG

Note: Centrifuge before opening to ensure complete recovery of vial contents.

Images



Western blot analysis of extracts of various cell lines using ASAH2 Polyclonal Antibody at dilution of 1:1000.

Immunogen Information

Immunogen	Recombinant fusion protein of human ASAH2 (NP_001137446.1).
GeneID	56624
Swissprot	Q9NR71
Synonyms	ASAH2,BCDase,HNAC1,LCDase,N-CDase,NCDase

Product Information

Calculated MW	81kDa/85kDa
Observed MW	85kDa
Buffer	PBS with 0.02% sodium azide, 50% glycerol, pH7.3.
Purify	Affinity purification
Dilution	WB 1:500-1:2000

Background

Ceramidases (EC 3.5.1.23), such as ASAH2, catalyze hydrolysis of the N-acyl linkage of ceramide, a second messenger in a variety of cellular events, to produce sphingosine. Sphingosine exerts both mitogenic and apoptosis-inducing activities, and its phosphorylated form functions as an intra- and intercellular second messenger.

For Research Use Only

Thank you for your recent purchase.
 If you would like to learn more about antibodies, please visit www.elabscience.com.

**Focus on your research
 Service for life science**

Applications:WB-Western Blot IHC-Immunohistochemistry IF-Immunofluorescence IP-Immunoprecipitation FC-Flow cytometry ChIP-Chromatin Immunoprecipitation Reactivity: H-Human R-Rat M-Mouse Mk-Monkey Dg-Dog Ch-Chicken Hm-Hamster Rb-Rabbit Sh-Sheep Pg-Pig Z-Zebrafish X-Xenopus C-Cow.