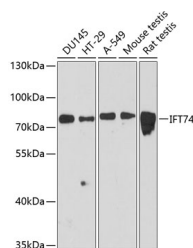


## IFT74 Polyclonal Antibody

<b>Catalog No.</b>	E-AB-64297	<b>Reactivity</b>	H,M,R
<b>Storage</b>	Store at -20°C. Avoid freeze / thaw cycles.	<b>Host</b>	Rabbit
<b>Applications</b>	WB	<b>Isotype</b>	IgG

**Note:** Centrifuge before opening to ensure complete recovery of vial contents.

### Images



Western blot analysis of extracts of various cell lines using IFT74 Polyclonal Antibody at dilution of 1:3000.

### Immunogen Information

<b>Immunogen</b>	Recombinant fusion protein of human IFT74 (NP_001092694.1).
<b>GeneID</b>	80173
<b>Swissprot</b>	Q96LB3
<b>Synonyms</b>	IFT74,BBS20,CCDC2,CMG-1,CMG1

### Product Information

<b>Calculated MW</b>	42kDa/69kDa
<b>Observed MW</b>	80kDa
<b>Buffer</b>	PBS with 0.02% sodium azide, 50% glycerol, pH7.3.
<b>Purify</b>	Affinity purification
<b>Dilution</b>	WB 1:1000-1:3000

### Background

Capillary morphogenesis protein 1 (CMG1), also known as intraflagellar transport protein 74 (ITP74) or coiled-coil domain-containing protein 2 (CCDC2), is a 600 amino acid human homologue of IFT-71, a complex B protein supporting intraflagellar transport (IFT) in Chlamydomonas. CMG1 localizes to the cytoplasmic vesicle and is highly expressed in adult and fetal kidney and testis, with lower levels of expression in adult heart, placenta, lung, liver and pancreas, and in fetal heart, lung and liver. CMG1 has been suggested to have a role in the primary cilia of HUVEC, and it also functions as a transcriptional regulator of cyclin D2 in spermatocyte-derived cells.

#### For Research Use Only

Thank you for your recent purchase.  
 If you would like to learn more about antibodies, please visit [www.elabscience.com](http://www.elabscience.com).

**Focus on your research  
 Service for life science**

Applications:WB-Western Blot IHC-Immunohistochemistry IF-Immunofluorescence IP-Immunoprecipitation FC-Flow cytometry ChIP-Chromatin Immunoprecipitation Reactivity: H-Human R-Rat M-Mouse Mk-Monkey Dg-Dog Ch-Chicken Hm-Hamster Rb-Rabbit Sh-Sheep Pg-Pig Z-Zebrafish X-Xenopus C-Cow.