

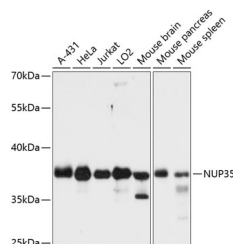
NUP35 Polyclonal Antibody

Catalog No. E-AB-64319
Storage Store at -20°C. Avoid freeze / thaw cycles.
Applications WB

Reactivity H,M,R
Host Rabbit
Isotype IgG

Note: Centrifuge before opening to ensure complete recovery of vial contents.

Images



Western blot analysis of extracts of various cell lines using NUP35 Polyclonal Antibody at dilution of 1:3000.

Immunogen Information

Immunogen Recombinant fusion protein of human NUP35 (NP_612142.2).
GeneID 129401
Swissprot Q8NFH5
Synonyms NUP35,MP-44,MP44,NP44,NUP53

Product Information

Calculated MW 21kDa/33kDa/34kDa
Observed MW 37kDa
Buffer PBS with 0.02% sodium azide, 50% glycerol, pH7.3.
Purify Affinity purification
Dilution WB 1:500-1:2000

Background

This gene encodes a member of the nucleoporin family. The encoded protein contains two membrane binding regions, is localized to the nuclear rim, and is part of the nuclear pore complex. All molecules entering or leaving the nucleus either diffuse through or are actively transported by the nuclear pore complex. Alternative splicing results in multiple transcript variants. Pseudogenes of this gene have been defined on chromosomes 7 and 10.

For Research Use Only

Thank you for your recent purchase.
If you would like to learn more about antibodies, please visit www.elabscience.com.

Focus on your research Service for life science

Applications: WB-Western Blot IHC-Immunohistochemistry IF-Immunofluorescence IP-Immunoprecipitation FC-Flow cytometry ChIP-Chromatin Immunoprecipitation Reactivity: H-Human R-Rat M-Mouse Mk-Monkey Dg-Dog Ch-Chicken Hm-Hamster Rb-Rabbit Sh-Sheep Pg-Pig Z-Zebrafish X-Xenopus C-Cow.