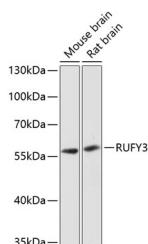


RUFY3 Polyclonal Antibody

Catalog No.	E-AB-64364	Reactivity	M,R
Storage	Store at -20°C. Avoid freeze / thaw cycles.	Host	Rabbit
Applications	WB	Isotype	IgG

Note: Centrifuge before opening to ensure complete recovery of vial contents.

Images



Western blot analysis of extracts of various cell lines using RUFY3 Polyclonal Antibody at dilution of 1:3000.

Immunogen Information

Immunogen	Recombinant fusion protein of human RUFY3 (NP_055776.1).
GeneID	22902
Swissprot	Q7L099
Synonyms	RUFY3,RIPX,SINGAR1,ZFYVE30

Product Information

Calculated MW	52kDa/55kDa/64kDa/70kDa
Observed MW	56kDa
Buffer	PBS with 0.02% sodium azide, 50% glycerol, pH7.3.
Purify	Affinity purification
Dilution	WB 1:500-1:2000

Background

This gene encodes a RPIP8, UNC-14, and NESCA domain-containing protein that is required for maintenance of neuronal polarity. In addition, it has been implicated in mediation of gastric cancer cell migration and invasion via interaction with P21-activated kinase-1, which promotes its expression. The encoded protein localizes to F-actin-enriched invadopodia to induce formation of protrusions, thereby facilitating cell migration. Alternative splicing results in multiple transcript variants.

For Research Use Only

Thank you for your recent purchase.
If you would like to learn more about antibodies, please visit www.elabscience.com.

Focus on your research Service for life science

Applications: WB-Western Blot IHC-Immunohistochemistry IF-Immunofluorescence IP-Immunoprecipitation FC-Flow cytometry ChIP-Chromatin Immunoprecipitation Reactivity: H-Human R-Rat M-Mouse Mk-Monkey Dg-Dog Ch-Chicken Hm-Hamster Rb-Rabbit Sh-Sheep Pg-Pig Z-Zebrafish X-Xenopus C-Cow.