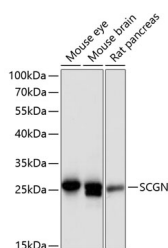


SCGN Polyclonal Antibody

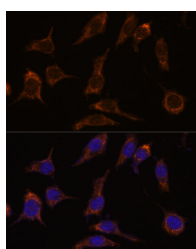
Catalog No.	E-AB-64365	Reactivity	H,M,R
Storage	Store at -20°C. Avoid freeze / thaw cycles.	Host	Rabbit
Applications	WB,IF	Isotype	IgG

Note: Centrifuge before opening to ensure complete recovery of vial contents.

Images



Western blot analysis of extracts of various cell lines using SCGN Polyclonal Antibody at dilution of 1:3000.



Immunofluorescence analysis of L929 cells using SCGN Polyclonal Antibody at dilution of 1:100. Blue: DAPI for nuclear staining.

Immunogen Information

Immunogen Recombinant fusion protein of human SCGN (NP_008929.2).

GeneID 10590

Swissprot O76038

Synonyms SCGN,CALBL,DJ501N12.8,SECRET,SEGN,setagin

Product Information

Calculated MW 32kDa

Observed MW 27kDa

Buffer PBS with 0.02% sodium azide, 50% glycerol, pH7.3.

Purify Affinity purification

Dilution WB 1:500-1:2000 IF 1:50-1:200

Background

The encoded protein is a secreted calcium-binding protein which is found in the cytoplasm. It is related to calbindin D-28K and calretinin. This protein is thought to be involved in KCL-stimulated calcium flux and cell proliferation.

For Research Use Only

Thank you for your recent purchase.

If you would like to learn more about antibodies, please visit www.elabscience.com.

**Focus on your research
 Service for life science**

Applications:WB-Western Blot IHC-Immunohistochemistry IF-Immunofluorescence IP-Immunoprecipitation FC-Flow cytometry ChIP-Chromatin Immunoprecipitation Reactivity: H-Human R-Rat M-Mouse Mk-Monkey Dg-Dog Ch-Chicken Hm-Hamster Rb-Rabbit Sh-Sheep Pg-Pig Z-Zebrafish X-Xenopus C-Cow.