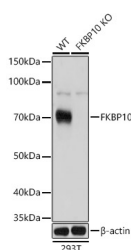


(KO Validated) FKBP10 Polyclonal Antibody

| | | | |
|---------------------|---|-------------------|--------|
| Catalog No. | E-AB-64381 | Reactivity | H,M |
| Storage | Store at -20°C. Avoid freeze / thaw cycles. | Host | Rabbit |
| Applications | WB | Isotype | IgG |

Note: Centrifuge before opening to ensure complete recovery of vial contents.

Images



Western blot analysis of extracts from wild type (WT) and FKBP10 knockout (KO) HeLa (KO) cells using FKBP10 Polyclonal Antibody at 1:3000 dilution.

Immunogen Information

| | |
|------------------|---|
| Immunogen | Recombinant fusion protein of human FKBP10 |
| GeneID | 60681 |
| Swissprot | Q96AY3 |
| Synonyms | FKBP10, BRKS1, FKBP65, OI11, OI6, PPIASE, hFKBP65 |

Product Information

| | |
|----------------------|---|
| Calculated MW | 38kDa/64kDa |
| Observed MW | 70kDa |
| Buffer | PBS with 0.01% thiomersal, 50% glycerol, pH7.3. |
| Purify | Affinity purification |
| Dilution | WB 1:500-1:2000 |

Background

The protein encoded by this gene belongs to the FKBP-type peptidyl-prolyl cis/trans isomerase (PPIase) family. This protein localizes to the endoplasmic reticulum and acts as a molecular chaperone. Alternatively spliced variants encoding different isoforms have been reported, but their biological validity has not been determined.

For Research Use Only

Thank you for your recent purchase.
 If you would like to learn more about antibodies, please visit www.elabscience.com.

**Focus on your research
 Service for life science**

Applications: WB-Western Blot IHC-Immunohistochemistry IF-Immunofluorescence IP-Immunoprecipitation FC-Flow cytometry ChIP-Chromatin Immunoprecipitation Reactivity: H-Human R-Rat M-Mouse Mk-Monkey Dg-Dog Ch-Chicken Hm-Hamster Rb-Rabbit Sh-Sheep Pg-Pig Z-Zebrafish X-Xenopus C-Cow.