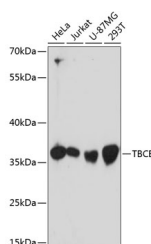


TBCB Polyclonal Antibody

Catalog No.	E-AB-64414	Reactivity	H
Storage	Store at -20°C. Avoid freeze / thaw cycles.	Host	Rabbit
Applications	WB	Isotype	IgG

Note: Centrifuge before opening to ensure complete recovery of vial contents.

Images



Western blot analysis of extracts of various cell lines using TBCB Polyclonal Antibody at dilution of 1:3000.

Immunogen Information

Immunogen	Recombinant fusion protein of human TBCB (NP_001272.2).
GeneID	1155
Swissprot	Q99426
Synonyms	TBCB,CG22,CKAP1,CKAPI

Product Information

Calculated MW	21kDa/27kDa
Observed MW	37kDa
Buffer	PBS with 0.02% sodium azide, 50% glycerol, pH7.3.
Purify	Affinity purification
Dilution	WB 1:500-1:2000

Background

Microtubules, the primary component of the cytoskeletal network, are highly dynamic structures composed of α/β Tubulin heterodimers. Biosynthesis of functional microtubules involve the participation of several chaperones, termed Tubulin folding cofactors A (TBCA), B (TBCB), D (TBCD), E (TBCE) and C (TBCC), that act on folding intermediates downstream of the cytosolic chaperon, alternatively named TCP. TBCB (tubulin folding cofactor B), also known as CG22, CKAP1 or CKAPI, is a 244 amino acid cytoplasmic protein containing one CAP-Gly domain and is widely expressed. TBCB is involved in the regulation of tubulin heterodimer dissociation and may function as a negative regulator of axonal growth.

For Research Use Only

Thank you for your recent purchase.
 If you would like to learn more about antibodies, please visit www.elabscience.com.

Focus on your research
Service for life science

Applications:WB-Western Blot IHC-Immunohistochemistry IF-Immunofluorescence IP-Immunoprecipitation FC-Flow cytometry ChIP-Chromatin Immunoprecipitation Reactivity: H-Human R-Rat M-Mouse Mk-Monkey Dg-Dog Ch-Chicken Hm-Hamster Rb-Rabbit Sh-Sheep Pg-Pig Z-Zebrafish X-Xenopus C-Cow.