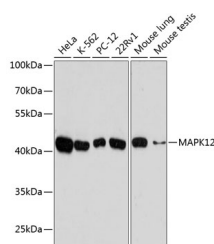


MAPK12 Polyclonal Antibody

Catalog No.	E-AB-64428	Reactivity	H,M,R
Storage	Store at -20°C. Avoid freeze / thaw cycles.	Host	Rabbit
Applications	WB	Isotype	IgG

Note: Centrifuge before opening to ensure complete recovery of vial contents.

Images



Western blot analysis of extracts of various cell lines using MAPK12 Polyclonal Antibody at dilution of 1:10000.

Immunogen Information

Immunogen	Recombinant fusion protein of human MAPK12 (NP_002960.2).
GeneID	6300
Swissprot	P53778
Synonyms	MAPK12,ERK-6,ERK3,ERK6,MAPK12,P38GAMMA,PRKM12,SAPK-3,SAPK3

Product Information

Calculated MW	40kDa/41kDa
Observed MW	42kDa
Buffer	PBS with 0.02% sodium azide, 50% glycerol, pH7.3.
Purify	Affinity purification
Dilution	WB 1:2000-1:5000

Background

Activation of members of the mitogen-activated protein kinase family is a major mechanism for transduction of extracellular signals. Stress-activated protein kinases are one subclass of MAP kinases. The protein encoded by this gene functions as a signal transducer during differentiation of myoblasts to myotubes.

For Research Use Only

Thank you for your recent purchase.
 If you would like to learn more about antibodies, please visit www.elabscience.com.

**Focus on your research
 Service for life science**

Applications:WB-Western Blot IHC-Immunohistochemistry IF-Immunofluorescence IP-Immunoprecipitation FC-Flow cytometry ChIP-Chromatin Immunoprecipitation Reactivity: H-Human R-Rat M-Mouse Mk-Monkey Dg-Dog Ch-Chicken Hm-Hamster Rb-Rabbit Sh-Sheep Pg-Pig Z-Zebrafish X-Xenopus C-Cow.