

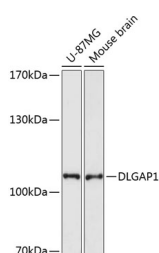
DLGAP1 Polyclonal Antibody

Catalog No. E-AB-64434
Storage Store at -20°C. Avoid freeze / thaw cycles.
Applications WB

Reactivity H,M
Host Rabbit
Isotype IgG

Note: Centrifuge before opening to ensure complete recovery of vial contents.

Images



Western blot analysis of extracts of various cell lines using DLGAP1 Polyclonal Antibody at dilution of 1:3000.

Immunogen Information

Immunogen Recombinant fusion protein of human DLGAP1 (NP_001229690.1).
GeneID 9229
Swissprot O14490
Synonyms DLGAP1,DAP-1,DAP-1-ALPHA,DAP-1-BETA,DAP1,DLGAP1A,DLGAP1B,GKAP,SAPAP1

Product Information

Calculated MW 69kDa/74kDa/75kDa/76kDa/103kDa/108kDa
Observed MW 109kDa
Buffer PBS with 0.02% sodium azide, 50% glycerol, pH7.3.
Purify Affinity purification
Dilution WB 1:500-1:2000

Background

DLGAP1 (DLG Associated Protein 1) is a Protein Coding gene. Diseases associated with DLGAP1 include Transient Tic Disorder and Obsessive-Compulsive Disorder. Among its related pathways are Neuroscience and Circadian entrainment. An important paralog of this gene is DLGAP2.

For Research Use Only

Thank you for your recent purchase.
If you would like to learn more about antibodies, please visit www.elabscience.com.

Focus on your research
Service for life science

Applications:WB-Western Blot IHC-Immunohistochemistry IF-Immunofluorescence IP-Immunoprecipitation FC-Flow cytometry ChIP-Chromatin Immunoprecipitation Reactivity: H-Human R-Rat M-Mouse Mk-Monkey Dg-Dog Ch-Chicken Hm-Hamster Rb-Rabbit Sh-Sheep Pg-Pig Z-Zebrafish X-Xenopus C-Cow.