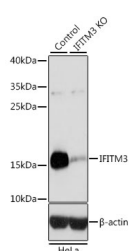


## (KO Validated) IFITM3 Polyclonal Antibody

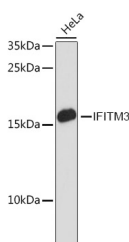
<b>Catalog No.</b>	E-AB-64439	<b>Reactivity</b>	H,M,R
<b>Storage</b>	Store at -20°C. Avoid freeze / thaw cycles.	<b>Host</b>	Rabbit
<b>Applications</b>	WB,IF	<b>Isotype</b>	IgG

**Note:** Centrifuge before opening to ensure complete recovery of vial contents.

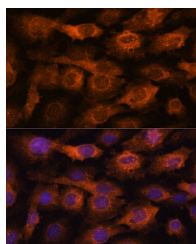
### Images



Western blot analysis of extracts from normal (control) and IFITM3 knockout (KO) HeLa cells using IFITM3 Polyclonal Antibody at dilution of 1:3000.



Western blot analysis of extracts of HeLa cells using IFITM3 Polyclonal Antibody at dilution of 1:3000.



Immunofluorescence analysis of C6 cells using IFITM3 Polyclonal Antibody at dilution of 1:100. Blue: DAPI for nuclear staining.

### Immunogen Information

<b>Immunogen</b>	Recombinant fusion protein of human IFITM3 (NP_066362.2).
<b>GeneID</b>	10410
<b>Swissprot</b>	Q01628
<b>Synonyms</b>	IFITM3,1-8U,DSPA2b,IP15

### Product Information

<b>Calculated MW</b>	14kDa
<b>Observed MW</b>	15kDa
<b>Buffer</b>	PBS with 0.02% sodium azide, 50% glycerol, pH7.3.
<b>Purify</b>	Affinity purification
<b>Dilution</b>	WB 1:500-1:2000 IF 1:50-1:100

### Background

The protein encoded by this gene is an interferon-induced membrane protein that helps confer immunity to influenza A H1N1 virus, West Nile virus, and dengue virus. Two transcript variants, only one of them protein-coding, have been found for this gene. Another variant encoding an N-terminally truncated isoform has been reported, but the full-length nature of this variant has not been determined.

### For Research Use Only

Thank you for your recent purchase.  
If you would like to learn more about antibodies, please visit [www.elabscience.com](http://www.elabscience.com).

### Focus on your research Service for life science

Applications: WB-Western Blot IHC-Immunohistochemistry IF-Immunofluorescence IP-Immunoprecipitation FC-Flow cytometry ChIP-Chromatin Immunoprecipitation Reactivity: H-Human R-Rat M-Mouse Mk-Monkey Dg-Dog Ch-Chicken Hm-Hamster Rb-Rabbit Sh-Sheep Pg-Pig Z-Zebrafish X-Xenopus C-Cow.