

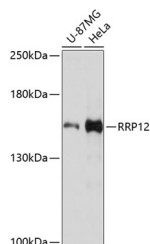
## RRP12 Polyclonal Antibody

**Catalog No.** E-AB-64443  
**Storage** Store at -20°C. Avoid freeze / thaw cycles.  
**Applications** WB

**Reactivity** H  
**Host** Rabbit  
**Isotype** IgG

**Note:** Centrifuge before opening to ensure complete recovery of vial contents.

### Images



Western blot analysis of extracts of various cell lines using RRP12 Polyclonal Antibody at dilution of 1:3000.

### Immunogen Information

**Immunogen** Recombinant fusion protein of human RRP12 (NP\_055994.2).  
**GeneID** 23223  
**Swissprot** Q5JTH9  
**Synonyms** RRP12, KIAA0690

### Product Information

**Calculated MW** 132kDa/137kDa/143kDa  
**Observed MW** 144kDa  
**Buffer** PBS with 0.02% sodium azide, 50% glycerol, pH7.3.  
**Purify** Affinity purification  
**Dilution** WB 1:500-1:2000

### Background

RRP12 (Ribosomal RNA Processing 12 Homolog) is a Protein Coding gene. Gene Ontology (GO) annotations related to this gene include binding.

#### For Research Use Only

Thank you for your recent purchase.  
If you would like to learn more about antibodies, please visit [www.elabscience.com](http://www.elabscience.com).

#### Focus on your research Service for life science

Applications: WB-Western Blot IHC-Immunohistochemistry IF-Immunofluorescence IP-Immunoprecipitation FC-Flow cytometry ChIP-Chromatin Immunoprecipitation Reactivity: H-Human R-Rat M-Mouse Mk-Monkey Dg-Dog Ch-Chicken Hm-Hamster Rb-Rabbit Sh-Sheep Pg-Pig Z-Zebrafish X-Xenopus C-Cow.