

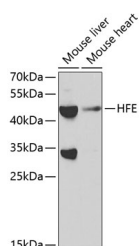
HFE Polyclonal Antibody

Catalog No. E-AB-60290
Storage Store at -20°C. Avoid freeze / thaw cycles.
Applications WB

Reactivity H,M
Host Rabbit
Isotype IgG

Note: Centrifuge before opening to ensure complete recovery of vial contents.

Images



Western blot analysis of extracts of various cell lines using HFE Polyclonal Antibody at 1:1000 dilution.

Immunogen Information

Immunogen Recombinant fusion protein of human HFE
GeneID 3077
Swissprot Q30201
Synonyms HFE,HFE1,HH,HLA-H,MVCD7,TFQTL2

Product Information

Calculated MW 8kDa/18kDa/27-40kDa
Observed MW 50kDa
Buffer PBS with 0.02% sodium azide,50% glycerol,pH7.3.
Purify Affinity purification
Dilution WB 1:500-1:2000

Background

The protein encoded by this gene is a membrane protein that is similar to MHC class I-type proteins and associates with beta2-microglobulin (beta2M). It is thought that this protein functions to regulate iron absorption by regulating the interaction of the transferrin receptor with transferrin. The iron storage disorder, hereditary haemochromatosis, is a recessive genetic disorder that results from defects in this gene. At least nine alternatively spliced variants have been described for this gene. Additional variants have been found but their full-length nature has not been determined.

For Research Use Only

Thank you for your recent purchase.
If you would like to learn more about antibodies, please visit www.elabscience.com.

Focus on your research Service for life science

Applications:WB-Western Blot IHC-Immunohistochemistry IF-Immunofluorescence IP-Immunoprecipitation FC-Flow cytometry ChIP-Chromatin Immunoprecipitation Reactivity: H-Human R-Rat M-Mouse Mk-Monkey Dg-Dog Ch-Chicken Hm-Hamster Rb-Rabbit Sh-Sheep Pg-Pig Z-Zebrafish X-Xenopus C-Cow.