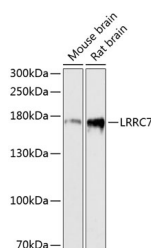


## LRRC7 Polyclonal Antibody

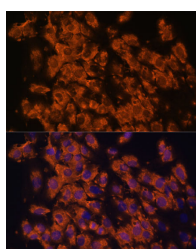
<b>Catalog No.</b>	E-AB-64461	<b>Reactivity</b>	H,M,R
<b>Storage</b>	Store at -20°C. Avoid freeze / thaw cycles.	<b>Host</b>	Rabbit
<b>Applications</b>	WB,IF	<b>Isotype</b>	IgG

**Note:** Centrifuge before opening to ensure complete recovery of vial contents.

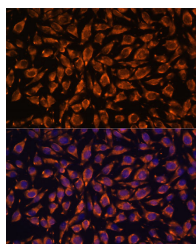
### Images



Western blot analysis of extracts of various cell lines using LRRC7 Polyclonal Antibody at dilution of 1:3000.



Immunofluorescence analysis of C6 cells using LRRC7 Polyclonal Antibody at dilution of 1:100. Blue: DAPI for nuclear staining.



Immunofluorescence analysis of L929 cells using LRRC7 Polyclonal Antibody at dilution of 1:100. Blue: DAPI for nuclear staining.

### Immunogen Information

<b>Immunogen</b>	Recombinant fusion protein of human LRRC7 (NP_065845.1).
<b>GeneID</b>	57554
<b>Swissprot</b>	Q96NW7
<b>Synonyms</b>	LRRC7,DENSIN

### Product Information

<b>Calculated MW</b>	20kDa/167kDa/172kDa
<b>Observed MW</b>	172kDa
<b>Buffer</b>	PBS with 0.02% sodium azide, 50% glycerol, pH7.3.
<b>Purify</b>	Affinity purification
<b>Dilution</b>	WB 1:500-1:2000 IF 1:50-1:200

### Background

LRRC7 (Leucine Rich Repeat Containing 7) is a Protein Coding gene. Diseases associated with LRRC7 include Dental Pulp Necrosis and Chromosome 3Q29 Deletion Syndrome. Among its related pathways are Innate Immune System. An important paralog of this gene is ERBIN.

#### For Research Use Only

Thank you for your recent purchase.  
If you would like to learn more about antibodies, please visit [www.elabscience.com](http://www.elabscience.com).

**Focus on your research**  
**Service for life science**

Applications: WB-Western Blot IHC-Immunohistochemistry IF-Immunofluorescence IP-Immunoprecipitation FC-Flow cytometry ChIP-Chromatin Immunoprecipitation Reactivity: H-Human R-Rat M-Mouse Mk-Monkey Dg-Dog Ch-Chicken Hm-Hamster Rb-Rabbit Sh-Sheep Pg-Pig Z-Zebrafish X-Xenopus C-Cow.