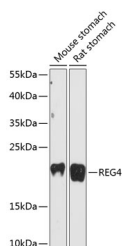


REG4 Polyclonal Antibody

Catalog No.	E-AB-64471	Reactivity	M,R
Storage	Store at -20°C. Avoid freeze / thaw cycles.	Host	Rabbit
Applications	WB	Isotype	IgG

Note: Centrifuge before opening to ensure complete recovery of vial contents.

Images



Western blot analysis of extracts of various cell lines using REG4 Polyclonal Antibody at dilution of 1:3000.

Immunogen Information

Immunogen	Recombinant fusion protein of human REG4 (NP_114433.1).
GeneID	83998
Swissprot	Q9BYZ8
Synonyms	REG4,GISP,REG-IV,REL P

Product Information

Calculated MW	14kDa/18kDa
Observed MW	18kDa
Buffer	PBS with 0.02% sodium azide, 50% glycerol, pH7.3.
Purify	Affinity purification
Dilution	WB 1:500-1:2000

Background

REG4 (Regenerating Family Member 4) is a Protein Coding gene. Diseases associated with REG4 include Ulcerative Colitis and Pseudomyxoma Peritonei. Among its related pathways are Gastric cancer and Adhesion. Gene Ontology (GO) annotations related to this gene include calcium ion binding and heparin binding. An important paralog of this gene is REG3A.

For Research Use Only

Thank you for your recent purchase.
 If you would like to learn more about antibodies, please visit www.elabscience.com.

**Focus on your research
 Service for life science**

Applications:WB-Western Blot IHC-Immunohistochemistry IF-Immunofluorescence IP-Immunoprecipitation FC-Flow cytometry ChIP-Chromatin Immunoprecipitation Reactivity: H-Human R-Rat M-Mouse Mk-Monkey Dg-Dog Ch-Chicken Hm-Hamster Rb-Rabbit Sh-Sheep Pg-Pig Z-Zebrafish X-Xenopus C-Cow.