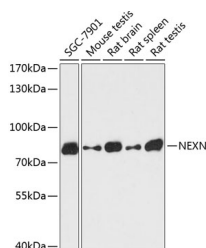


NEXN Polyclonal Antibody

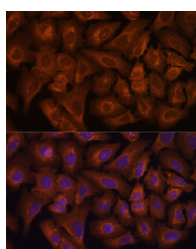
Catalog No.	E-AB-64474	Reactivity	H,M,R
Storage	Store at -20°C. Avoid freeze / thaw cycles.	Host	Rabbit
Applications	WB,IF	Isotype	IgG

Note: Centrifuge before opening to ensure complete recovery of vial contents.

Images



Western blot analysis of extracts of various cell lines using NEXN Polyclonal Antibody at dilution of 1:3000.



Immunofluorescence analysis of U-2 OS cells using NEXN Polyclonal Antibody at dilution of 1:100. Blue: DAPI for nuclear staining.

Immunogen Information

Immunogen	Recombinant fusion protein of human NEXN (NP_653174.3).
GeneID	91624
Swissprot	Q0ZGT2
Synonyms	NEXN,CMH20,NELIN,nexilin

Product Information

Calculated MW	72kDa/73kDa/79kDa/80kDa
Observed MW	81kDa
Buffer	PBS with 0.02% sodium azide, 50% glycerol, pH7.3.
Purify	Affinity purification
Dilution	WB 1:500-1:2000 IF 1:50-1:200

Background

This gene encodes a filamentous actin-binding protein that may function in cell adhesion and migration. Mutations in this gene have been associated with dilated cardiomyopathy, also known as CMD1CC. Alternatively spliced transcript variants have been described.

For Research Use Only

Thank you for your recent purchase.
 If you would like to learn more about antibodies, please visit www.elabscience.com.

**Focus on your research
 Service for life science**

Applications:WB-Western Blot IHC-Immunohistochemistry IF-Immunofluorescence IP-Immunoprecipitation FC-Flow cytometry ChIP-Chromatin Immunoprecipitation Reactivity: H-Human R-Rat M-Mouse Mk-Monkey Dg-Dog Ch-Chicken Hm-Hamster Rb-Rabbit Sh-Sheep Pg-Pig Z-Zebrafish X-Xenopus C-Cow.