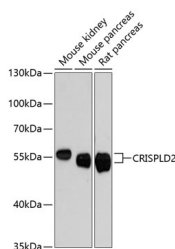


## CRISPLD2 Polyclonal Antibody

<b>Catalog No.</b>	E-AB-64496	<b>Reactivity</b>	M,R
<b>Storage</b>	Store at -20°C. Avoid freeze / thaw cycles.	<b>Host</b>	Rabbit
<b>Applications</b>	WB	<b>Isotype</b>	IgG

**Note:** Centrifuge before opening to ensure complete recovery of vial contents.

### Images



Western blot analysis of extracts of various cell lines using CRISPLD2 Polyclonal Antibody at dilution of 1:3000.

### Immunogen Information

<b>Immunogen</b>	Recombinant fusion protein of human CRISPLD2 (NP_113664.1).
<b>GeneID</b>	83716
<b>Swissprot</b>	Q9H0B8
<b>Synonyms</b>	CRISPLD2,CRISP11,LCRISP2,LGL1

### Product Information

<b>Calculated MW</b>	13kDa/17kDa/42kDa/51kDa/55kDa
<b>Observed MW</b>	56kDa
<b>Buffer</b>	PBS with 0.02% sodium azide, 50% glycerol, pH7.3.
<b>Purify</b>	Affinity purification
<b>Dilution</b>	WB 1:500-1:2000

### Background

CRISPLD2 (Cysteine Rich Secretory Protein LCCL Domain Containing 2) is a Protein Coding gene. Diseases associated with CRISPLD2 include Orofacial Cleft 15 and Cleft Lip. Among its related pathways are Innate Immune System. Gene Ontology (GO) annotations related to this gene include heparin binding and glycosaminoglycan binding. An important paralog of this gene is CRISPLD1.

#### For Research Use Only

Thank you for your recent purchase.  
 If you would like to learn more about antibodies, please visit [www.elabscience.com](http://www.elabscience.com).

**Focus on your research  
 Service for life science**

Applications:WB-Western Blot IHC-Immunohistochemistry IF-Immunofluorescence IP-Immunoprecipitation FC-Flow cytometry ChIP-Chromatin Immunoprecipitation Reactivity: H-Human R-Rat M-Mouse Mk-Monkey Dg-Dog Ch-Chicken Hm-Hamster Rb-Rabbit Sh-Sheep Pg-Pig Z-Zebrafish X-Xenopus C-Cow.