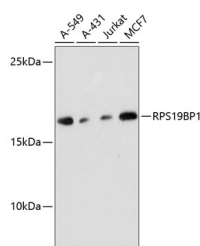


RPS19BP1 Polyclonal Antibody

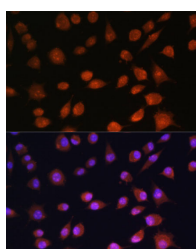
Catalog No.	E-AB-64510	Reactivity	H,M,R
Storage	Store at -20°C. Avoid freeze / thaw cycles.	Host	Rabbit
Applications	WB,IF	Isotype	IgG

Note: Centrifuge before opening to ensure complete recovery of vial contents.

Images



Western blot analysis of extracts of various cell lines using RPS19BP1 Polyclonal Antibody at dilution of 1:3000.



Immunofluorescence analysis of L929 cells using RPS19BP1 Polyclonal Antibody at dilution of 1:100. Blue: DAPI for nuclear staining.

Immunogen Information

Immunogen	Recombinant fusion protein of human RPS19BP1 (NP_919307.1).
GeneID	91582
Swissprot	Q86WX3
Synonyms	RPS19BP1,AROS,S19BP

Product Information

Calculated MW	15kDa
Observed MW	20kDa
Buffer	PBS with 0.02% sodium azide, 50% glycerol, pH7.3.
Purify	Affinity purification
Dilution	WB 1:500-1:2000 IF 1:50-1:200

Background

RPS19BP1 (Ribosomal Protein S19 Binding Protein 1) is a Protein Coding gene. Diseases associated with RPS19BP1 include Inhibited Female Orgasm and Amyotrophic Lateral Sclerosis 1. Among its related pathways are Cellular response to heat stress and Cellular Senescence (REACTOME). Gene Ontology (GO) annotations related to this gene include enzyme binding.

For Research Use Only

Thank you for your recent purchase.
 If you would like to learn more about antibodies, please visit www.elabscience.com.

**Focus on your research
 Service for life science**

Applications:WB-Western Blot IHC-Immunohistochemistry IF-Immunofluorescence IP-Immunoprecipitation FC-Flow cytometry ChIP-Chromatin Immunoprecipitation Reactivity: H-Human R-Rat M-Mouse Mk-Monkey Dg-Dog Ch-Chicken Hm-Hamster Rb-Rabbit Sh-Sheep Pg-Pig Z-Zebrafish X-Xenopus C-Cow.