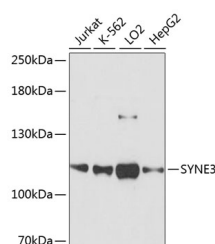


SYNE3 Polyclonal Antibody

Catalog No.	E-AB-64512	Reactivity	H
Storage	Store at -20°C. Avoid freeze / thaw cycles.	Host	Rabbit
Applications	WB	Isotype	IgG

Note: Centrifuge before opening to ensure complete recovery of vial contents.

Images



Western blot analysis of extracts of various cell lines using SYNE3 Polyclonal Antibody at dilution of 1:3000.

Immunogen Information

Immunogen	Recombinant fusion protein of human SYNE3 (NP_689805.3).
GeneID	161176
Swissprot	Q6ZMZ3
Synonyms	SYNE3,C14orf139,C14orf49,KASH3,LINC00341,NCRNA00341,NET53,Nesp3,nesprin-3

Product Information

Calculated MW	68kDa/111kDa/112kDa
Observed MW	112kDa
Buffer	PBS with 0.02% sodium azide, 50% glycerol, pH7.3.
Purify	Affinity purification
Dilution	WB 1:500-1:2000

Background

SYNE3 (Spectrin Repeat Containing Nuclear Envelope Family Member 3) is a Protein Coding gene. Diseases associated with SYNE3 include Spinocerebellar Ataxia, Autosomal Recessive 8 and Emery-Dreifuss Muscular Dystrophy 3, Autosomal Recessive. Gene Ontology (GO) annotations related to this gene include actin binding and actin filament binding. An important paralog of this gene is SPTBN2.

For Research Use Only

Thank you for your recent purchase.
 If you would like to learn more about antibodies, please visit www.elabscience.com.

**Focus on your research
 Service for life science**

Applications:WB-Western Blot IHC-Immunohistochemistry IF-Immunofluorescence IP-Immunoprecipitation FC-Flow cytometry ChIP-Chromatin Immunoprecipitation Reactivity: H-Human R-Rat M-Mouse Mk-Monkey Dg-Dog Ch-Chicken Hm-Hamster Rb-Rabbit Sh-Sheep Pg-Pig Z-Zebrafish X-Xenopus C-Cow.