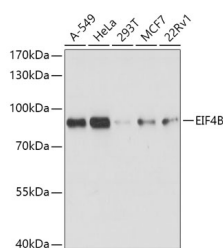


## EIF4B Polyclonal Antibody

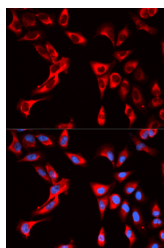
<b>Catalog No.</b>	E-AB-64544	<b>Reactivity</b>	H
<b>Storage</b>	Store at -20°C. Avoid freeze / thaw cycles.	<b>Host</b>	Rabbit
<b>Applications</b>	WB,IF	<b>Isotype</b>	IgG

**Note:** Centrifuge before opening to ensure complete recovery of vial contents.

### Images



Western blot analysis of extracts of various cell lines using EIF4B Polyclonal Antibody at dilution of 1:1000.



Immunofluorescence analysis of U2OS cells using EIF4B Polyclonal Antibody

### Immunogen Information

<b>Immunogen</b>	Recombinant fusion protein of human EIF4B (NP_001408.2).
<b>GeneID</b>	1975
<b>Swissprot</b>	P23588
<b>Synonyms</b>	EIF4B,EIF-4B,PRO1843

### Product Information

<b>Calculated MW</b>	64kDa/69kDa
<b>Observed MW</b>	80kDa
<b>Buffer</b>	PBS with 0.02% sodium azide, 50% glycerol, pH7.3.
<b>Purify</b>	Affinity purification
<b>Dilution</b>	WB 1:500-1:2000 IF 1:50-1:200

### Background

EIF4B (Eukaryotic Translation Initiation Factor 4B) is a Protein Coding gene. Diseases associated with EIF4B include Mouth Disease. Among its related pathways are Activation of the mRNA upon binding of the cap-binding complex and eIFs, and subsequent binding to 43S and Viral mRNA Translation. Gene Ontology (GO) annotations related to this gene include nucleic acid binding and RNA binding. An important paralog of this gene is EIF4H.

#### For Research Use Only

Thank you for your recent purchase.  
 If you would like to learn more about antibodies, please visit [www.elabscience.com](http://www.elabscience.com).

**Focus on your research  
 Service for life science**

Applications:WB-Western Blot IHC-Immunohistochemistry IF-Immunofluorescence IP-Immunoprecipitation FC-Flow cytometry ChIP-Chromatin Immunoprecipitation Reactivity: H-Human R-Rat M-Mouse Mk-Monkey Dg-Dog Ch-Chicken Hm-Hamster Rb-Rabbit Sh-Sheep Pg-Pig Z-Zebrafish X-Xenopus C-Cow.