

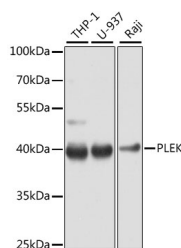
## PLEK Polyclonal Antibody

**Catalog No.** E-AB-64564  
**Storage** Store at -20°C. Avoid freeze / thaw cycles.  
**Applications** WB,IHC

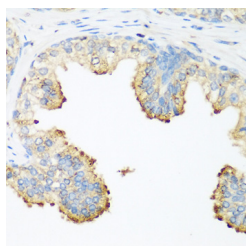
**Reactivity** H  
**Host** Rabbit  
**Isotype** IgG

**Note:** Centrifuge before opening to ensure complete recovery of vial contents.

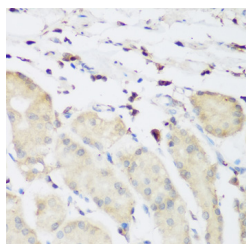
### Images



Western blot analysis of extracts of various cell lines using PLEK Polyclonal Antibody at dilution of 1:1000.



Immunohistochemistry of paraffin-embedded Human prostate using PLEK Polyclonal Antibody at dilution of 1:200 (40x lens).



Immunohistochemistry of paraffin-embedded Human stomach using PLEK Polyclonal Antibody at dilution of 1:200 (40x lens).

### Immunogen Information

**Immunogen** Recombinant fusion protein of human PLEK (NP\_002655.2).  
**GeneID** 5341  
**Swissprot** P08567  
**Synonyms** PLEK,P47

### Product Information

**Calculated MW** 40kDa  
**Observed MW** 40kDa  
**Buffer** PBS with 0.02% sodium azide, 50% glycerol, pH7.3.  
**Purify** Affinity purification  
**Dilution** WB 1:500-1:2000 IHC 1:50-1:200

### Background

PLEK (Pleckstrin) is a Protein Coding gene. Diseases associated with PLEK include Agammaglobulinemia, X-Linked and Aarskog-Scott Syndrome. Among its related pathways are Response to elevated platelet cytosolic Ca<sup>2+</sup>. Gene Ontology (GO) annotations related to this gene include protein homodimerization activity and phosphatidylinositol-3,4-bisphosphate binding. An important paralog of this gene is PLEK2.

### For Research Use Only

Thank you for your recent purchase.  
If you would like to learn more about antibodies, please visit [www.elabscience.com](http://www.elabscience.com).

### Focus on your research Service for life science

Applications: WB-Western Blot IHC-Immunohistochemistry IF-Immunofluorescence IP-Immunoprecipitation FC-Flow cytometry ChIP-Chromatin Immunoprecipitation Reactivity: H-Human R-Rat M-Mouse Mk-Monkey Dg-Dog Ch-Chicken Hm-Hamster Rb-Rabbit Sh-Sheep Pg-Pig Z-Zebrafish X-Xenopus C-Cow.