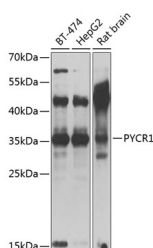


## PYCR1 Polyclonal Antibody

|                     |   |                   |        |
|---------------------|---|-------------------|--------|
| <b>Catalog No.</b>  | E-AB-64571                                  | <b>Reactivity</b> | H,M,R  |
| <b>Storage</b>      | Store at -20°C. Avoid freeze / thaw cycles. | <b>Host</b>       | Rabbit |
| <b>Applications</b> | WB,IF                                       | <b>Isotype</b>    | IgG    |

**Note:** Centrifuge before opening to ensure complete recovery of vial contents.

### Images



Western blot analysis of extracts of various cell lines using PYCR1 Polyclonal Antibody at 1:1000 dilution.

### Immunogen Information

|                  |  |
|------------------|--|
| <b>Immunogen</b> | Recombinant fusion protein of human PYCR1          |
| <b>GeneID</b>    | 5831   |
| <b>Swissprot</b> | P32322   |
| <b>Synonyms</b>  | PYCR1,ARCL2B,ARCL3B,P5C,P5CR,PIG45,PP222,PRO3,PYCR |

### Product Information

|                      |   |
|----------------------|---|
| <b>Calculated MW</b> | 33kDa/35kDa                                     |
| <b>Observed MW</b>   | 35kDa   |
| <b>Buffer</b>        | PBS with 0.02% sodium azide,50% glycerol,pH7.3. |
| <b>Purify</b>        | Affinity purification                           |
| <b>Dilution</b>      | WB 1:500-1:2000,IF 1:50-1:100                   |

### Background

This gene encodes an enzyme that catalyzes the NAD(P)H-dependent conversion of pyrroline-5-carboxylate to proline. This enzyme may also play a physiologic role in the generation of NADP(+) in some cell types. The protein forms a homopolymer and localizes to the mitochondrion. Alternative splicing results in multiple transcript variants.

#### For Research Use Only

Thank you for your recent purchase.  
 If you would like to learn more about antibodies, please visit [www.elabscience.com](http://www.elabscience.com).

**Focus on your research  
 Service for life science**

Applications:WB-Western Blot IHC-Immunohistochemistry IF-Immunofluorescence IP-Immunoprecipitation FC-Flow cytometry ChIP-Chromatin Immunoprecipitation Reactivity: H-Human R-Rat M-Mouse Mk-Monkey Dg-Dog Ch-Chicken Hm-Hamster Rb-Rabbit Sh-Sheep Pg-Pig Z-Zebrafish X-Xenopus C-Cow.