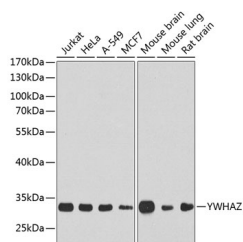


## YWHAZ Polyclonal Antibody

|                     |   |                   |        |
|---------------------|---|-------------------|--------|
| <b>Catalog No.</b>  | E-AB-64591                                  | <b>Reactivity</b> | H,M,R  |
| <b>Storage</b>      | Store at -20°C. Avoid freeze / thaw cycles. | <b>Host</b>       | Rabbit |
| <b>Applications</b> | WB  | <b>Isotype</b>    | IgG    |

**Note:** Centrifuge before opening to ensure complete recovery of vial contents.

### Images



Western blot analysis of extracts of various cell lines using YWHAZ Polyclonal Antibody at 1:1000 dilution.

### Immunogen Information

|                  |  |
|------------------|--|
| <b>Immunogen</b> | A synthetic peptide of human YWHAZ                         |
| <b>GeneID</b>    | 7534   |
| <b>Swissprot</b> | P63104   |
| <b>Synonyms</b>  | YWHAZ, 14-3-3-zeta, HEL-S-3, HEL-S-93, HEL4, KCIP-1, YWHAD |

### Product Information

|                      |   |
|----------------------|---|
| <b>Calculated MW</b> | 19kDa/27kDa                                       |
| <b>Observed MW</b>   | 28kDa   |
| <b>Buffer</b>        | PBS with 0.02% sodium azide, 50% glycerol, pH7.3. |
| <b>Purify</b>        | Affinity purification                             |
| <b>Dilution</b>      | WB 1:500-1:2000                                   |

### Background

This gene product belongs to the 14-3-3 family of proteins which mediate signal transduction by binding to phosphoserine-containing proteins. This highly conserved protein family is found in both plants and mammals, and this protein is 99% identical to the mouse, rat and sheep orthologs. The encoded protein interacts with IRS1 protein, suggesting a role in regulating insulin sensitivity. Several transcript variants that differ in the 5' UTR but that encode the same protein have been identified for this gene.

#### For Research Use Only

Thank you for your recent purchase.  
 If you would like to learn more about antibodies, please visit [www.elabscience.com](http://www.elabscience.com).

**Focus on your research  
 Service for life science**

Applications: WB-Western Blot IHC-Immunohistochemistry IF-Immunofluorescence IP-Immunoprecipitation FC-Flow cytometry ChIP-Chromatin Immunoprecipitation Reactivity: H-Human R-Rat M-Mouse Mk-Monkey Dg-Dog Ch-Chicken Hm-Hamster Rb-Rabbit Sh-Sheep Pg-Pig Z-Zebrafish X-Xenopus C-Cow.