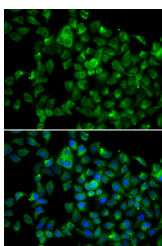


## NAT8B Polyclonal Antibody

<b>Catalog No.</b>	E-AB-64631	<b>Reactivity</b>	H
<b>Storage</b>	Store at -20°C. Avoid freeze / thaw cycles.	<b>Host</b>	Rabbit
<b>Applications</b>	IF	<b>Isotype</b>	IgG

**Note:** Centrifuge before opening to ensure complete recovery of vial contents.

### Images



Immunofluorescence analysis of A549 cells using NAT8B Polyclonal Antibody

### Immunogen Information

<b>Immunogen</b>	Recombinant fusion protein of human NAT8B (NP_057431.2).
<b>GeneID</b>	51471
<b>Swissprot</b>	Q9UHF3
<b>Synonyms</b>	NAT8B,CML2,Hcml2,NAT8BP

### Product Information

<b>Buffer</b>	PBS with 0.02% sodium azide, 50% glycerol, pH7.3.
<b>Purify</b>	Affinity purification
<b>Dilution</b>	IF 1:50-1:200

### Background

The protein encoded by this gene is highly similar to the N-acetyltransferase 8 (NAT8) gene product, which is a kidney and liver protein with homology to bacterial acetyltransferases involved in drug resistance. This gene is localized on chromosome 2 in the vicinity of the NAT8 gene and may represent a pseudogene of NAT8. This gene contains two polymorphic nonsense mutations that disrupt the active site of the protein. The full-length product of this gene contains a complete acetyltransferase domain and is identical in length to NAT8.

#### For Research Use Only

Thank you for your recent purchase.  
 If you would like to learn more about antibodies, please visit [www.elabscience.com](http://www.elabscience.com).

**Focus on your research  
 Service for life science**

Applications: WB-Western Blot IHC-Immunohistochemistry IF-Immunofluorescence IP-Immunoprecipitation FC-Flow cytometry ChIP-Chromatin Immunoprecipitation Reactivity: H-Human R-Rat M-Mouse Mk-Monkey Dg-Dog Ch-Chicken Hm-Hamster Rb-Rabbit Sh-Sheep Pg-Pig Z-Zebrafish X-Xenopus C-Cow.