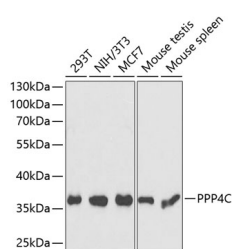


PPP4C Polyclonal Antibody

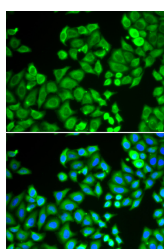
| | | | |
|---------------------|---|-------------------|--------|
| Catalog No. | E-AB-64694 | Reactivity | H,M,R |
| Storage | Store at -20°C. Avoid freeze / thaw cycles. | Host | Rabbit |
| Applications | WB,IF | Isotype | IgG |

Note: Centrifuge before opening to ensure complete recovery of vial contents.

Images



Western blot analysis of extracts of various cell lines using PPP4C Polyclonal Antibody at dilution of 1:1000.



Immunofluorescence analysis of U2OS cells using PPP4C Polyclonal Antibody

Immunogen Information

| | |
|------------------|--|
| Immunogen | Recombinant fusion protein of human PPP4C (NP_002711.1). |
| GeneID | 5531 |
| Swissprot | P60510 |
| Synonyms | PPP4C,PP-X,PP4,PP4C,PPH3,PPP4,PPX |

Product Information

| | |
|----------------------|---|
| Calculated MW | 35kDa |
| Observed MW | 36kDa |
| Buffer | PBS with 0.02% sodium azide, 50% glycerol, pH7.3. |
| Purify | Affinity purification |
| Dilution | WB 1:500-1:2000 IF 1:50-1:200 |

Background

PPP4C (Protein Phosphatase 4 Catalytic Subunit) is a Protein Coding gene. Diseases associated with PPP4C include Contagious Pustular Dermatitis and Impulse Control Disorder. Among its related pathways are Glucagon signaling pathway and DNA Double-Strand Break Repair. Gene Ontology (GO) annotations related to this gene include hydrolase activity and protein serine/threonine phosphatase activity. An important paralog of this gene is PPP2CA.

For Research Use Only

Thank you for your recent purchase.
 If you would like to learn more about antibodies, please visit www.elabscience.com.

**Focus on your research
 Service for life science**

Applications:WB-Western Blot IHC-Immunohistochemistry IF-Immunofluorescence IP-Immunoprecipitation FC-Flow cytometry ChIP-Chromatin Immunoprecipitation Reactivity: H-Human R-Rat M-Mouse Mk-Monkey Dg-Dog Ch-Chicken Hm-Hamster Rb-Rabbit Sh-Sheep Pg-Pig Z-Zebrafish X-Xenopus C-Cow.