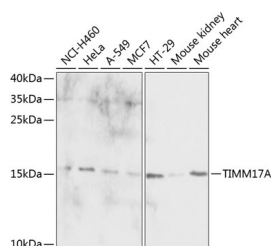


TIMM17A Polyclonal Antibody

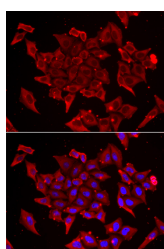
Catalog No.	E-AB-64730	Reactivity	H,M
Storage	Store at -20°C. Avoid freeze / thaw cycles.	Host	Rabbit
Applications	WB,IF	Isotype	IgG

Note: Centrifuge before opening to ensure complete recovery of vial contents.

Images



Western blot analysis of extracts of various cell lines using TIMM17A Polyclonal Antibody at 1:1000 dilution.



Immunofluorescence analysis of U2OS cells using TIMM17A Polyclonal Antibody Blue: DAPI for nuclear staining.

Immunogen Information

Immunogen	Recombinant fusion protein of human TIMM17A
GeneID	10440
Swissprot	Q99595
Synonyms	TIMM17A,TIM17,TIM17A

Product Information

Calculated MW	18kDa
Observed MW	18kDa
Buffer	PBS with 0.02% sodium azide,50% glycerol,pH7.3.
Purify	Affinity purification
Dilution	WB 1:500-1:2000,IF 1:50-1:200

Background

Essential component of the TIM23 complex, a complex that mediates the translocation of transit peptide-containing proteins across the mitochondrial inner membrane.

For Research Use Only

Thank you for your recent purchase.
 If you would like to learn more about antibodies, please visit www.elabscience.com.

**Focus on your research
 Service for life science**

Applications:WB-Western Blot IHC-Immunohistochemistry IF-Immunofluorescence IP-Immunoprecipitation FC-Flow cytometry ChIP-Chromatin Immunoprecipitation Reactivity: H-Human R-Rat M-Mouse Mk-Monkey Dg-Dog Ch-Chicken Hm-Hamster Rb-Rabbit Sh-Sheep Pg-Pig Z-Zebrafish X-Xenopus C-Cow.