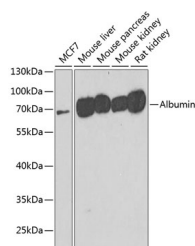


Albumin Polyclonal Antibody

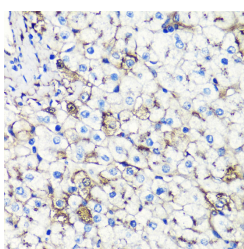
| | | | |
|---------------------|---|-------------------|--------|
| Catalog No. | E-AB-60296 | Reactivity | H,M,R |
| Storage | Store at -20°C. Avoid freeze / thaw cycles. | Host | Rabbit |
| Applications | WB,IHC,IF | Isotype | IgG |

Note: Centrifuge before opening to ensure complete recovery of vial contents.

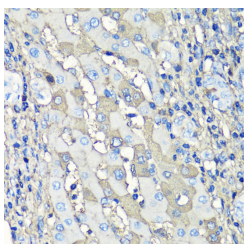
Images



Western blot analysis of extracts of various cell lines using Albumin Polyclonal Antibody at dilution of 1:500.



Immunohistochemistry of paraffin-embedded Human liver using Albumin Polyclonal Antibody at dilution of 1:100 (40x lens).



Immunohistochemistry of paraffin-embedded Human liver cancer using Albumin Polyclonal Antibody at dilution of 1:100 (40x lens).

Immunogen Information

| | |
|------------------|---|
| Immunogen | Recombinant protein of human Albumin |
| GeneID | 213 |
| Swissprot | P02768 |
| Synonyms | ALB,HSA,PRO0883,PRO0903,PRO1341,albumin,Albumin |

Product Information

| | |
|----------------------|---|
| Calculated MW | 45kDa/47kDa/69kDa |
| Observed MW | 69kDa |
| Buffer | PBS with 0.02% sodium azide, 50% glycerol, pH7.3. |
| Purify | Affinity purification |
| Dilution | WB 1:500-1:2000 IHC 1:50-1:100 IF 1:50-1:100 |

Background

Albumin is a soluble, monomeric protein which comprises about one-half of the blood serum protein. Albumin functions primarily as a carrier protein for steroids, fatty acids, and thyroid hormones and plays a role in stabilizing extracellular fluid volume. Albumin is a globular unglycosylated serum protein of molecular weight 65,000. Albumin is synthesized in the liver as prealbumin which has an N-terminal peptide that is removed before the nascent protein is released from the rough endoplasmic reticulum. The product, prealbumin, is in turn cleaved in the Golgi vesicles to produce the secreted albumin.

For Research Use Only

Thank you for your recent purchase.
 If you would like to learn more about antibodies, please visit www.elabscience.com.

**Focus on your research
 Service for life science**

Applications:WB-Western Blot IHC-Immunohistochemistry IF-Immunofluorescence IP-Immunoprecipitation FC-Flow cytometry ChIP-Chromatin Immunoprecipitation Reactivity: H-Human R-Rat M-Mouse Mk-Monkey Dg-Dog Ch-Chicken Hm-Hamster Rb-Rabbit Sh-Sheep Pg-Pig Z-Zebrafish X-Xenopus C-Cow.