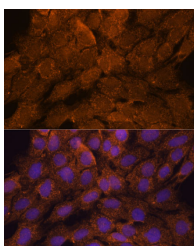


TNFAIP8L2 Polyclonal Antibody

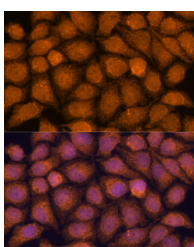
Catalog No.	E-AB-64797	Reactivity	H,M,R
Storage	Store at -20°C. Avoid freeze / thaw cycles.	Host	Rabbit
Applications	IF	Isotype	IgG

Note: Centrifuge before opening to ensure complete recovery of vial contents.

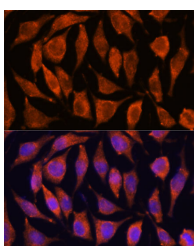
Images



Immunofluorescence analysis of C6 cells using TNFAIP8L2 Polyclonal Antibody at dilution of 1:100. Blue: DAPI for nuclear staining.



Immunofluorescence analysis of HeLa cells using TNFAIP8L2 Polyclonal Antibody at dilution of 1:100. Blue: DAPI for nuclear staining.



Immunofluorescence analysis of L929 cells using TNFAIP8L2 Polyclonal Antibody at dilution of 1:100. Blue: DAPI for nuclear staining.

Immunogen Information

Immunogen	Recombinant fusion protein of human TNFAIP8L2 (NP_078851.2).
GeneID	79626
Swissprot	Q6P589
Synonyms	TNFAIP8L2, TIPE2

Product Information

Buffer	PBS with 0.02% sodium azide, 50% glycerol, pH7.3.
Purify	Affinity purification
Dilution	IF 1:50-1:200

Background

TNFAIP8L2 (TNF Alpha Induced Protein 8 Like 2) is a Protein Coding gene. Diseases associated with TNFAIP8L2 include Skin Squamous Cell Carcinoma. Among its related pathways are Metabolism and Glycerophospholipid biosynthesis. An important paralog of this gene is TNFAIP8L1.

For Research Use Only

Thank you for your recent purchase.
 If you would like to learn more about antibodies, please visit www.elabscience.com.

**Focus on your research
 Service for life science**

Applications: WB-Western Blot IHC-Immunohistochemistry IF-Immunofluorescence IP-Immunoprecipitation FC-Flow cytometry ChIP-Chromatin Immunoprecipitation Reactivity: H-Human R-Rat M-Mouse Mk-Monkey Dg-Dog Ch-Chicken Hm-Hamster Rb-Rabbit Sh-Sheep Pg-Pig Z-Zebrafish X-Xenopus C-Cow.