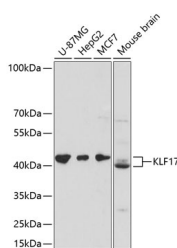


KLF17 Polyclonal Antibody

Catalog No.	E-AB-64813	Reactivity	H,M
Storage	Store at -20°C. Avoid freeze / thaw cycles.	Host	Rabbit
Applications	WB	Isotype	IgG

Note: Centrifuge before opening to ensure complete recovery of vial contents.

Images



Western blot analysis of extracts of various cell lines using KLF17 Polyclonal Antibody at dilution of 1:3000.

Immunogen Information

Immunogen	Recombinant fusion protein of human KLF17 (NP_775755.3).
GeneID	128209
Swissprot	Q5JT82
Synonyms	KLF17,ZNF393,Zfp393

Product Information

Calculated MW	42kDa
Observed MW	43kDa
Buffer	PBS with 0.02% sodium azide, 50% glycerol, pH7.3.
Purify	Affinity purification
Dilution	WB 1:500-1:2000

Background

KLF17 (Kruppel Like Factor 17) is a Protein Coding gene. Diseases associated with KLF17 include Breast Cancer. Gene Ontology (GO) annotations related to this gene include DNA-binding transcription factor activity and transcription regulatory region DNA binding. An important paralog of this gene is KLF10.

For Research Use Only

Thank you for your recent purchase.
 If you would like to learn more about antibodies, please visit www.elabscience.com.

**Focus on your research
 Service for life science**

Applications:WB-Western Blot IHC-Immunohistochemistry IF-Immunofluorescence IP-Immunoprecipitation FC-Flow cytometry ChIP-Chromatin Immunoprecipitation Reactivity: H-Human R-Rat M-Mouse Mk-Monkey Dg-Dog Ch-Chicken Hm-Hamster Rb-Rabbit Sh-Sheep Pg-Pig Z-Zebrafish X-Xenopus C-Cow.