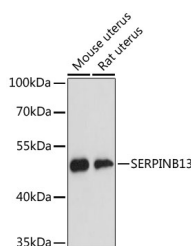


SERPINB13 Polyclonal Antibody

Catalog No.	E-AB-64814	Reactivity	H,M,R
Storage	Store at -20°C. Avoid freeze / thaw cycles.	Host	Rabbit
Applications	WB	Isotype	IgG

Note: Centrifuge before opening to ensure complete recovery of vial contents.

Images



Western blot analysis of extracts of various cell lines using SERPINB13 Polyclonal Antibody at dilution of 1:3000.

Immunogen Information

Immunogen	Recombinant fusion protein of human SERPINB13 (NP_036529.1).
GeneID	5275
Swissprot	Q9UIV8
Synonyms	SERPINB13,HSHUR7SEQ,HUR7,PI13,headpin

Product Information

Calculated MW	38kDa/44kDa
Observed MW	44kDa
Buffer	PBS with 0.02% sodium azide, 50% glycerol, pH7.3.
Purify	Affinity purification
Dilution	WB 1:500-1:2000

Background

The protein encoded by this gene is a member of the serpin family of serine protease inhibitors. The encoded protein inhibits the activity of cathepsin K and is itself transcriptionally repressed by RUNX1. This gene is downregulated in many types of cancer.

For Research Use Only

Thank you for your recent purchase.
 If you would like to learn more about antibodies, please visit www.elabscience.com.

**Focus on your research
 Service for life science**

Applications:WB-Western Blot IHC-Immunohistochemistry IF-Immunofluorescence IP-Immunoprecipitation FC-Flow cytometry ChIP-Chromatin Immunoprecipitation Reactivity: H-Human R-Rat M-Mouse Mk-Monkey Dg-Dog Ch-Chicken Hm-Hamster Rb-Rabbit Sh-Sheep Pg-Pig Z-Zebrafish X-Xenopus C-Cow.