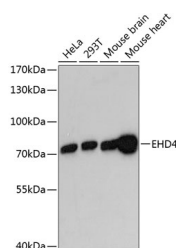


EHD4 Polyclonal Antibody

Catalog No.	E-AB-64820	Reactivity	H,M
Storage	Store at -20°C. Avoid freeze / thaw cycles.	Host	Rabbit
Applications	WB	Isotype	IgG

Note: Centrifuge before opening to ensure complete recovery of vial contents.

Images



Western blot analysis of extracts of various cell lines using EHD4 Polyclonal Antibody at dilution of 1:3000.

Immunogen Information

Immunogen	Recombinant fusion protein of human EHD4 (NP_644670.1).
GeneID	30844
Swissprot	Q9H223
Synonyms	EHD4,PAST4

Product Information

Calculated MW	61kDa
Observed MW	72kDa
Buffer	PBS with 0.02% sodium azide, 50% glycerol, pH7.3.
Purify	Affinity purification
Dilution	WB 1:500-1:2000

Background

EHD4 (EH Domain Containing 4) is a Protein Coding gene. Diseases associated with EHD4 include Penis Carcinoma In Situ and Early Congenital Syphilis. Among its related pathways are Endocytosis and Neurotrophic factor-mediated Trk receptor signaling. Gene Ontology (GO) annotations related to this gene include nucleic acid binding and GTP binding. An important paralog of this gene is EHD1.

For Research Use Only

Thank you for your recent purchase.
 If you would like to learn more about antibodies, please visit www.elabscience.com.

**Focus on your research
 Service for life science**

Applications:WB-Western Blot IHC-Immunohistochemistry IF-Immunofluorescence IP-Immunoprecipitation FC-Flow cytometry ChIP-Chromatin Immunoprecipitation Reactivity: H-Human R-Rat M-Mouse Mk-Monkey Dg-Dog Ch-Chicken Hm-Hamster Rb-Rabbit Sh-Sheep Pg-Pig Z-Zebrafish X-Xenopus C-Cow.