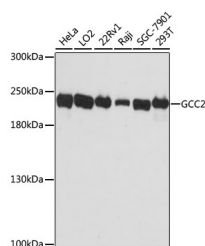


## GCC2 Polyclonal Antibody

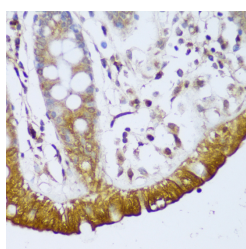
<b>Catalog No.</b>	E-AB-64832	<b>Reactivity</b>	H,M
<b>Storage</b>	Store at -20°C. Avoid freeze / thaw cycles.	<b>Host</b>	Rabbit
<b>Applications</b>	WB,IHC	<b>Isotype</b>	IgG

**Note:** Centrifuge before opening to ensure complete recovery of vial contents.

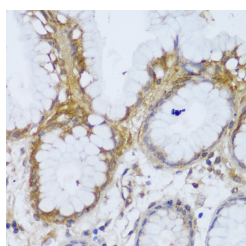
### Images



Western blot analysis of extracts of various cell lines using GCC2 Polyclonal Antibody at dilution of 1:3000.



Immunohistochemistry of paraffin-embedded Human colon using GCC2 Polyclonal Antibody at dilution of 1:150 (40x lens).



Immunohistochemistry of paraffin-embedded Human stomach using GCC2 Polyclonal Antibody at dilution of 1:150 (40x lens).

### Immunogen Information

<b>Immunogen</b>	Recombinant fusion protein of human GCC2 (NP_852118.1).
<b>GeneID</b>	9648
<b>Swissprot</b>	Q8IWI2
<b>Synonyms</b>	GCC2,GCC185,RANBP2L4,REN53

### Product Information

<b>Calculated MW</b>	5kDa/195kDa
<b>Observed MW</b>	196kDa
<b>Buffer</b>	PBS with 0.02% sodium azide, 50% glycerol, pH7.3.
<b>Purify</b>	Affinity purification
<b>Dilution</b>	WB 1:500-1:2000 IHC 1:50-1:200

### Background

The protein encoded by this gene is a peripheral membrane protein localized to the trans-Golgi network. It is sensitive to brefeldin A. This encoded protein contains a GRIP domain which is thought to be used in targeting. Alternative splicing results in multiple transcript variants.

#### For Research Use Only

Thank you for your recent purchase.  
 If you would like to learn more about antibodies, please visit [www.elabscience.com](http://www.elabscience.com).

**Focus on your research  
 Service for life science**

Applications:WB-Western Blot IHC-Immunohistochemistry IF-Immunofluorescence IP-Immunoprecipitation FC-Flow cytometry ChIP-Chromatin Immunoprecipitation Reactivity: H-Human R-Rat M-Mouse Mk-Monkey Dg-Dog Ch-Chicken Hm-Hamster Rb-Rabbit Sh-Sheep Pg-Pig Z-Zebrafish X-Xenopus C-Cow.