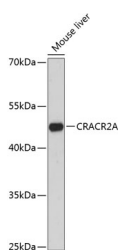


## CRACR2A Polyclonal Antibody

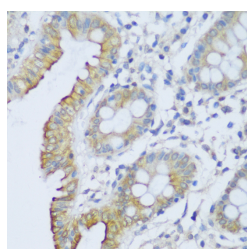
<b>Catalog No.</b>	E-AB-64839	<b>Reactivity</b>	H,M
<b>Storage</b>	Store at -20°C. Avoid freeze / thaw cycles.	<b>Host</b>	Rabbit
<b>Applications</b>	WB,IHC	<b>Isotype</b>	IgG

**Note:** Centrifuge before opening to ensure complete recovery of vial contents.

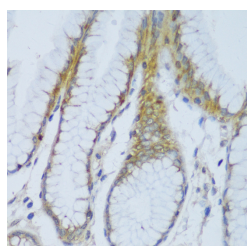
### Images



Western blot analysis of extracts of Mouse liver using CRACR2A Polyclonal Antibody at dilution of 1:3000.



Immunohistochemistry of paraffin-embedded Human colon using CRACR2A Polyclonal Antibody at dilution of 1:150 (40x lens).



Immunohistochemistry of paraffin-embedded Human stomach using CRACR2A Polyclonal Antibody at dilution of 1:150 (40x lens).

### Immunogen Information

<b>Immunogen</b>	Recombinant fusion protein of human CRACR2A (NP_001138430.1).
<b>GeneID</b>	84766
<b>Swissprot</b>	Q9BSW2
<b>Synonyms</b>	CRACR2A,EFCAB4B

### Product Information

<b>Calculated MW</b>	45kDa/83kDa
<b>Observed MW</b>	45kDa
<b>Buffer</b>	PBS with 0.02% sodium azide, 50% glycerol, pH7.3.
<b>Purify</b>	Affinity purification
<b>Dilution</b>	WB 1:500-1:2000 IHC 1:50-1:200

### Background

Ca<sup>2+</sup>-binding protein that plays a key role in store-operated Ca<sup>2+</sup>-entry (SOCE) in T-cells by regulating CRAC channel activation. Acts as a cytoplasmic calcium-sensor that facilitates the clustering of ORAI1 and STIM1 at the junctional regions between the plasma membrane and the endoplasmic reticulum upon low Ca<sup>2+</sup>-concentration. It thereby regulates CRAC channel activation, including translocation and clustering of ORAI1 and STIM1. Upon increase of cytoplasmic Ca<sup>2+</sup>-resulting from opening of CRAC channels, dissociates from ORAI1 and STIM1, thereby destabilizing the ORAI1-STIM1 complex.

#### For Research Use Only

Thank you for your recent purchase.  
 If you would like to learn more about antibodies, please visit [www.elabscience.com](http://www.elabscience.com).

**Focus on your research**  
**Service for life science**

Applications:WB-Western Blot IHC-Immunohistochemistry IF-Immunofluorescence IP-Immunoprecipitation FC-Flow cytometry ChIP-Chromatin Immunoprecipitation Reactivity: H-Human R-Rat M-Mouse Mk-Monkey Dg-Dog Ch-Chicken Hm-Hamster Rb-Rabbit Sh-Sheep Pg-Pig Z-Zebrafish X-Xenopus C-Cow.