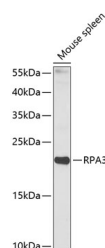


RPA3 Polyclonal Antibody

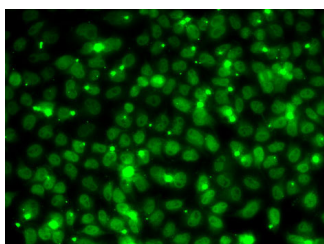
| | | | |
|---------------------|---|-------------------|--------|
| Catalog No. | E-AB-64914 | Reactivity | H,M,R |
| Storage | Store at -20°C. Avoid freeze / thaw cycles. | Host | Rabbit |
| Applications | WB,IF | Isotype | IgG |

Note: Centrifuge before opening to ensure complete recovery of vial contents.

Images



Western blot analysis of extracts of Mouse spleen using RPA3 Polyclonal Antibody at dilution of 1:1000.



Immunofluorescence analysis of MCF7 cells using RPA3 Polyclonal Antibody

Immunogen Information

| | |
|------------------|---|
| Immunogen | Recombinant fusion protein of human RPA3 (NP_002938.1). |
| GeneID | 6119 |
| Swissprot | P35244 |
| Synonyms | RPA3,REPA3,RP-A p14,RP-Ap14 |

Product Information

| | |
|----------------------|---|
| Calculated MW | 13kDa |
| Observed MW | 19kDa |
| Buffer | PBS with 0.02% sodium azide, 50% glycerol, pH7.3. |
| Purify | Affinity purification |
| Dilution | WB 1:500-1:2000 IF 1:50-1:200 |

Background

RPA3 (Replication Protein A3) is a Protein Coding gene. Diseases associated with RPA3 include Xeroderma Pigmentosum, Variant Type. Among its related pathways are Regulation of activated PAK-2p34 by proteasome mediated degradation and Homologous DNA Pairing and Strand Exchange. Gene Ontology (GO) annotations related to this gene include single-stranded DNA binding and damaged DNA binding.

For Research Use Only

Thank you for your recent purchase.
 If you would like to learn more about antibodies, please visit www.elabscience.com.

**Focus on your research
 Service for life science**

Applications:WB-Western Blot IHC-Immunohistochemistry IF-Immunofluorescence IP-Immunoprecipitation FC-Flow cytometry ChIP-Chromatin Immunoprecipitation Reactivity: H-Human R-Rat M-Mouse Mk-Monkey Dg-Dog Ch-Chicken Hm-Hamster Rb-Rabbit Sh-Sheep Pg-Pig Z-Zebrafish X-Xenopus C-Cow.