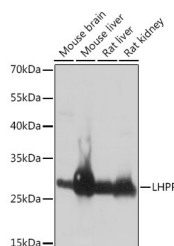


LHPP Polyclonal Antibody

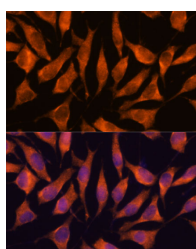
Catalog No.	E-AB-64982	Reactivity	H,M,R
Storage	Store at -20°C. Avoid freeze / thaw cycles.	Host	Rabbit
Applications	WB,IF	Isotype	IgG

Note: Centrifuge before opening to ensure complete recovery of vial contents.

Images



Western blot analysis of extracts of various cell lines using LHPP Polyclonal Antibody at dilution of 1:1000.



Immunofluorescence analysis of L929 cells using LHPP Polyclonal Antibody at dilution of 1:100. Blue: DAPI for nuclear staining.

Immunogen Information

Immunogen	Recombinant fusion protein of human LHPP (NP_071409.3).
GeneID	64077
Swissprot	Q9H008
Synonyms	LHPP,HDHD2B

Product Information

Calculated MW	22kDa/29kDa
Observed MW	29kDa
Buffer	PBS with 0.02% sodium azide, 50% glycerol, pH7.3.
Purify	Affinity purification
Dilution	WB 1:500-1:2000 IF 1:50-1:200

Background

LHPP (Phospholysine Phosphohistidine Inorganic Pyrophosphate Phosphatase) is a Protein Coding gene. Diseases associated with LHPP include Melancholia and Major Depressive Disorder. Among its related pathways are Respiratory electron transport, ATP synthesis by chemiosmotic coupling, and heat production by uncoupling proteins, and Metabolism. Gene Ontology (GO) annotations related to this gene include protein homodimerization activity and inorganic diphosphatase activity. An important paralog of this gene is HDHD2.

For Research Use Only

Thank you for your recent purchase.
 If you would like to learn more about antibodies, please visit www.elabscience.com.

**Focus on your research
 Service for life science**

Applications:WB-Western Blot IHC-Immunohistochemistry IF-Immunofluorescence IP-Immunoprecipitation FC-Flow cytometry ChIP-Chromatin Immunoprecipitation Reactivity: H-Human R-Rat M-Mouse Mk-Monkey Dg-Dog Ch-Chicken Hm-Hamster Rb-Rabbit Sh-Sheep Pg-Pig Z-Zebrafish X-Xenopus C-Cow.