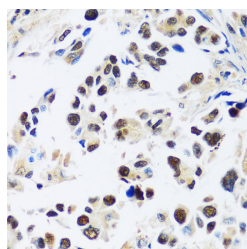


## ASCL4 Polyclonal Antibody

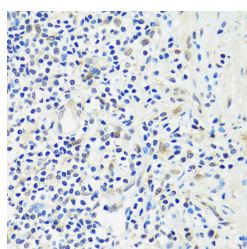
<b>Catalog No.</b>	E-AB-65006	<b>Reactivity</b>	H,R
<b>Storage</b>	Store at -20°C. Avoid freeze / thaw cycles.	<b>Host</b>	Rabbit
<b>Applications</b>	IHC	<b>Isotype</b>	IgG

**Note:** Centrifuge before opening to ensure complete recovery of vial contents.

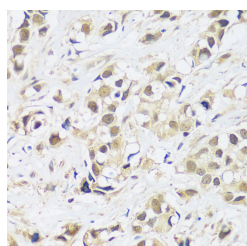
### Images



Immunohistochemistry of paraffin-embedded Human lung cancer using ASCL4 Polyclonal Antibody at dilution of 1:100 (40x lens).



Immunohistochemistry of paraffin-embedded Human appendix using ASCL4 Polyclonal Antibody at dilution of 1:100 (40x lens).



Immunohistochemistry of paraffin-embedded Human breast cancer using ASCL4 Polyclonal Antibody at dilution of 1:100 (40x lens).

### Immunogen Information

<b>Immunogen</b>	Recombinant fusion protein of human ASCL4 (NP_982260.2).
<b>GeneID</b>	121549
<b>Swissprot</b>	Q6XD76
<b>Synonyms</b>	ASCL4,HASH4,bHLHa44

### Product Information

<b>Buffer</b>	PBS with 0.02% sodium azide, 50% glycerol, pH7.3.
<b>Purify</b>	Affinity purification
<b>Dilution</b>	IHC 1:50-1:100

### Background

ASCL4 (Achaete-Scute Family BHLH Transcription Factor 4) is a Protein Coding gene. Diseases associated with ASCL4 include Secondary Hypertrophic Osteoarthropathy and Porokeratosis. Gene Ontology (GO) annotations related to this gene include protein dimerization activity. An important paralog of this gene is ASCL5.

#### For Research Use Only

Thank you for your recent purchase.  
 If you would like to learn more about antibodies, please visit [www.elabscience.com](http://www.elabscience.com).

**Focus on your research  
 Service for life science**

Applications:WB-Western Blot IHC-Immunohistochemistry IF-Immunofluorescence IP-Immunoprecipitation FC-Flow cytometry ChIP-Chromatin Immunoprecipitation Reactivity: H-Human R-Rat M-Mouse Mk-Monkey Dg-Dog Ch-Chicken Hm-Hamster Rb-Rabbit Sh-Sheep Pg-Pig Z-Zebrafish X-Xenopus C-Cow.