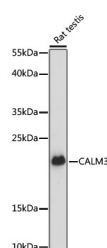


CALM3 Polyclonal Antibody

Catalog No.	E-AB-65026	Reactivity	H,M,R
Storage	Store at -20°C. Avoid freeze / thaw cycles.	Host	Rabbit
Applications	WB	Isotype	IgG

Note: Centrifuge before opening to ensure complete recovery of vial contents.

Images



Western blot analysis of extracts of Rat testis using CALM3 Polyclonal Antibody at dilution of 1:3000.

Immunogen Information

Immunogen	A synthetic peptide of human CALM3 (NP_005175.2).
GeneID	808
Swissprot	P62158
Synonyms	CALM3,CaM,CaMIII,HEL-S-72,PHKD,PHKD3

Product Information

Calculated MW	16kDa
Observed MW	17kDa
Buffer	PBS with 0.02% sodium azide, 50% glycerol, pH7.3.
Purify	Affinity purification
Dilution	WB 1:500-1:2000

Background

CALM3 (Calmodulin 3) is a Protein Coding gene. Diseases associated with CALM3 include Long Qt Syndrome 16 and Long Qt Syndrome 1. Among its related pathways are DAG and IP3 signaling and Transport of glucose and other sugars, bile salts and organic acids, metal ions and amine compounds. Gene Ontology (GO) annotations related to this gene include calcium ion binding and protein domain specific binding. An important paralog of this gene is CALM2.

For Research Use Only

Thank you for your recent purchase.

If you would like to learn more about antibodies, please visit www.elabscience.com.

**Focus on your research
 Service for life science**

Applications:WB-Western Blot IHC-Immunohistochemistry IF-Immunofluorescence IP-Immunoprecipitation FC-Flow cytometry ChIP-Chromatin Immunoprecipitation Reactivity: H-Human R-Rat M-Mouse Mk-Monkey Dg-Dog Ch-Chicken Hm-Hamster Rb-Rabbit Sh-Sheep Pg-Pig Z-Zebrafish X-Xenopus C-Cow.