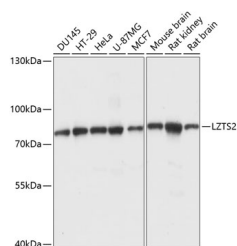


## LZTS2 Polyclonal Antibody

<b>Catalog No.</b>	E-AB-65047	<b>Reactivity</b>	H,M,R
<b>Storage</b>	Store at -20°C. Avoid freeze / thaw cycles.	<b>Host</b>	Rabbit
<b>Applications</b>	WB	<b>Isotype</b>	IgG

**Note:** Centrifuge before opening to ensure complete recovery of vial contents.

### Images



Western blot analysis of extracts of various cell lines using LZTS2 Polyclonal Antibody at dilution of 1:1000.

### Immunogen Information

<b>Immunogen</b>	Recombinant fusion protein of human LZTS2 (NP_115805.1).
<b>GeneID</b>	84445
<b>Swissprot</b>	Q9BRK4
<b>Synonyms</b>	LZTS2,LAPSER1

### Product Information

<b>Calculated MW</b>	72kDa
<b>Observed MW</b>	73kDa
<b>Buffer</b>	PBS with 0.02% sodium azide, 50% glycerol, pH7.3.
<b>Purify</b>	Affinity purification
<b>Dilution</b>	WB 1:500-1:2000

### Background

The protein encoded by this gene belongs to the leucine zipper tumor suppressor family of proteins, which function in transcription regulation and cell cycle control. This family member can repress beta-catenin-mediated transcriptional activation and is a negative regulator of the Wnt signaling pathway. It negatively regulates microtubule severing at centrosomes, and is necessary for central spindle formation and cytokinesis completion. It is implicated in cancer, where it may inhibit cell proliferation and decrease susceptibility to tumor development. Alternative splicing of this gene results in multiple transcript variants.

#### For Research Use Only

Thank you for your recent purchase.  
 If you would like to learn more about antibodies, please visit [www.elabscience.com](http://www.elabscience.com).

**Focus on your research  
 Service for life science**

Applications:WB-Western Blot IHC-Immunohistochemistry IF-Immunofluorescence IP-Immunoprecipitation FC-Flow cytometry ChIP-Chromatin Immunoprecipitation Reactivity: H-Human R-Rat M-Mouse Mk-Monkey Dg-Dog Ch-Chicken Hm-Hamster Rb-Rabbit Sh-Sheep Pg-Pig Z-Zebrafish X-Xenopus C-Cow.