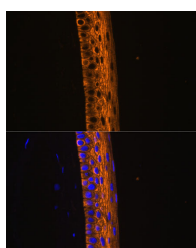


## MYH13 Polyclonal Antibody

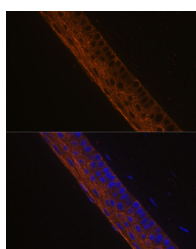
<b>Catalog No.</b>	E-AB-65053	<b>Reactivity</b>	M,R
<b>Storage</b>	Store at -20°C. Avoid freeze / thaw cycles.	<b>Host</b>	Rabbit
<b>Applications</b>	IF	<b>Isotype</b>	IgG

**Note:** Centrifuge before opening to ensure complete recovery of vial contents.

### Images



Immunofluorescence analysis of Rat eye using MYH13 Polyclonal Antibody at dilution of 1:100 (40x lens). Blue: DAPI for nuclear staining.



Immunofluorescence analysis of Mouse eye using MYH13 Polyclonal Antibody at dilution of 1:100 (40x lens). Blue: DAPI for nuclear staining.

### Immunogen Information

<b>Immunogen</b>	Recombinant fusion protein of human MYH13 (NP_003793.2).
<b>GeneID</b>	8735
<b>Swissprot</b>	Q9UKX3
<b>Synonyms</b>	MYH13,MyHC-IIL,MyHC-eo,myosin-13

### Product Information

<b>Buffer</b>	PBS with 0.02% sodium azide, 50% glycerol, pH7.3.
<b>Purify</b>	Affinity purification
<b>Dilution</b>	IF 1:50-1:100

### Background

MYH13 (Myosin Heavy Chain 13) is a Protein Coding gene. Diseases associated with MYH13 include Ventricular Tachycardia, Catecholaminergic Polymorphic, 1, With Or Without Atrial Dysfunction And/Or Dilated Cardiomyopathy. Among its related pathways are Actin Nucleation by ARP-WASP Complex and Cytoskeleton remodeling Regulation of actin cytoskeleton by Rho GTPases. Gene Ontology (GO) annotations related to this gene include actin binding and motor activity. An important paralog of this gene is MYH2.

#### For Research Use Only

Thank you for your recent purchase.  
 If you would like to learn more about antibodies, please visit [www.elabscience.com](http://www.elabscience.com).

**Focus on your research  
 Service for life science**

Applications:WB-Western Blot IHC-Immunohistochemistry IF-Immunofluorescence IP-Immunoprecipitation FC-Flow cytometry ChIP-Chromatin Immunoprecipitation Reactivity: H-Human R-Rat M-Mouse Mk-Monkey Dg-Dog Ch-Chicken Hm-Hamster Rb-Rabbit Sh-Sheep Pg-Pig Z-Zebrafish X-Xenopus C-Cow.