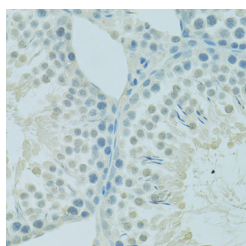


PSIP1 Polyclonal Antibody

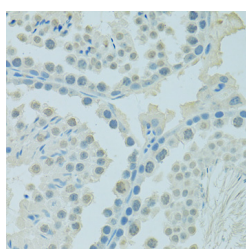
| | | | |
|---------------------|---|-------------------|--------|
| Catalog No. | E-AB-65131 | Reactivity | H,M,R |
| Storage | Store at -20°C. Avoid freeze / thaw cycles. | Host | Rabbit |
| Applications | IHC | Isotype | IgG |

Note: Centrifuge before opening to ensure complete recovery of vial contents.

Images



Immunohistochemistry of paraffin-embedded Rat testis using PSIP1 Polyclonal Antibody at dilution of 1:100 (40x lens).



Immunohistochemistry of paraffin-embedded Mouse testis using PSIP1 Polyclonal Antibody at dilution of 1:100 (40x lens).

Immunogen Information

| | |
|------------------|--|
| Immunogen | Recombinant fusion protein of human PSIP1 (NP_150091.2). |
| GeneID | 11168 |
| Swissprot | O75475 |
| Synonyms | PSIP1,DFS70,LEDGF,PAIP,PSIP2,p52,p75 |

Product Information

| | |
|-----------------|---|
| Buffer | PBS with 0.02% sodium azide, 50% glycerol, pH7.3. |
| Purify | Affinity purification |
| Dilution | IHC 1:50-1:200 |

Background

PSIP1 (PC4 And SFRS1 Interacting Protein 1) is a Protein Coding gene. Diseases associated with PSIP1 include Dermatitis, Atopic and Immune Deficiency Disease. Among its related pathways are Neuroscience and NF-KappaB Family Pathway. An important paralog of this gene is HDGFL2.

For Research Use Only

Thank you for your recent purchase.
 If you would like to learn more about antibodies, please visit www.elabscience.com.

**Focus on your research
 Service for life science**

Applications:WB-Western Blot IHC-Immunohistochemistry IF-Immunofluorescence IP-Immunoprecipitation FC-Flow cytometry ChIP-Chromatin Immunoprecipitation Reactivity: H-Human R-Rat M-Mouse Mk-Monkey Dg-Dog Ch-Chicken Hm-Hamster Rb-Rabbit Sh-Sheep Pg-Pig Z-Zebrafish X-Xenopus C-Cow.