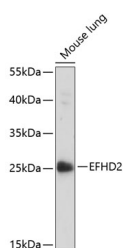


EFHD2 Polyclonal Antibody

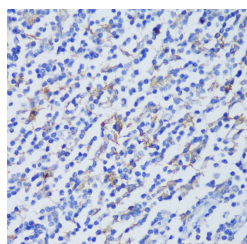
Catalog No.	E-AB-65153	Reactivity	H,M
Storage	Store at -20°C. Avoid freeze / thaw cycles.	Host	Rabbit
Applications	WB,IHC	Isotype	IgG

Note: Centrifuge before opening to ensure complete recovery of vial contents.

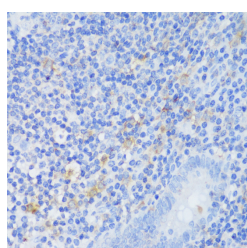
Images



Western blot analysis of extracts of Mouse lung using EFHD2 Polyclonal Antibody at dilution of 1:1000.



Immunohistochemistry of paraffin-embedded Human tonsil using EFHD2 Polyclonal Antibody at dilution of 1:150 (40x lens).



Immunohistochemistry of paraffin-embedded Human appendix using EFHD2 Polyclonal Antibody at dilution of 1:150 (40x lens).

Immunogen Information

Immunogen	Recombinant fusion protein of human EFHD2 (NP_077305.2).
GeneID	79180
Swissprot	Q96C19
Synonyms	EFHD2,SWS1

Product Information

Calculated MW	26kDa
Observed MW	27kDa
Buffer	PBS with 0.02% sodium azide, 50% glycerol, pH7.3.
Purify	Affinity purification
Dilution	WB 1:500-1:2000 IHC 1:50-1:200

Background

EFHD2 (EF-Hand Domain Family Member D2) is a Protein Coding gene. Diseases associated with EFHD2 include Motion Sickness. Gene Ontology (GO) annotations related to this gene include calcium ion binding. An important paralog of this gene is EFHD1.

For Research Use Only

Thank you for your recent purchase.
 If you would like to learn more about antibodies, please visit www.elabscience.com.

**Focus on your research
 Service for life science**

Applications:WB-Western Blot IHC-Immunohistochemistry IF-Immunofluorescence IP-Immunoprecipitation FC-Flow cytometry ChIP-Chromatin Immunoprecipitation Reactivity: H-Human R-Rat M-Mouse Mk-Monkey Dg-Dog Ch-Chicken Hm-Hamster Rb-Rabbit Sh-Sheep Pg-Pig Z-Zebrafish X-Xenopus C-Cow.