

LDHAL6B Polyclonal Antibody

Catalog No. E-AB-65158

Note: Centrifuge before opening to ensure complete recovery of vial contents.

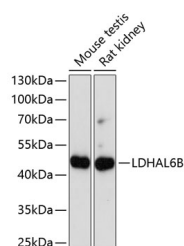
Description

Reactivity	Mouse,Rat
Immunogen	Recombinant fusion protein of human LDHAL6B (NP_149972.1).
Host	Rabbit
Isotype	IgG
Purification	Affinity purification
Conjugation	Unconjugated
Buffer	PBS with 0.02% sodium azide, 50% glycerol, pH7.3.

Applications Recommended Dilution

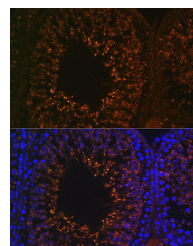
WB	1:500-1:2000
IF	1:50-1:200

Data



Western blot analysis of extracts of various cell lines using LDHAL6B Polyclonal Antibody at dilution of 1:1000.

Observed Mw:42kDa
Calculated Mw:41kDa



Immunofluorescence analysis of Rat testis using LDHAL6B Polyclonal Antibody at dilution of 1:100.
Blue: DAPI for nuclear staining.

Preparation & Storage

Storage Store at -20°C. Avoid freeze / thaw cycles.

Background

LDHAL6B belongs to the LDH/MDH superfamily, LDH family. The specific function of the protein remains unknown.

For Research Use Only