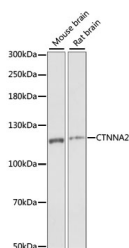


CTNNA2 Polyclonal Antibody

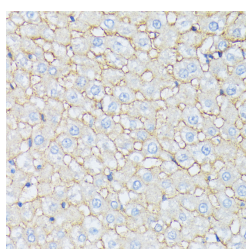
| | | | |
|---------------------|---|-------------------|--------|
| Catalog No. | E-AB-65239 | Reactivity | M,R |
| Storage | Store at -20°C. Avoid freeze / thaw cycles. | Host | Rabbit |
| Applications | WB,IHC | Isotype | IgG |

Note: Centrifuge before opening to ensure complete recovery of vial contents.

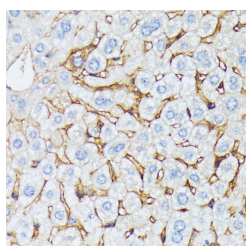
Images



Western blot analysis of extracts of various cell lines using CTNNA2 Polyclonal Antibody at dilution of 1:1000.



Immunohistochemistry of paraffin-embedded Rat liver using CTNNA2 Polyclonal Antibody at dilution of 1:100 (40x lens).



Immunohistochemistry of paraffin-embedded Mouse liver using CTNNA2 Polyclonal Antibody at dilution of 1:100 (40x lens).

Immunogen Information

| | |
|------------------|---|
| Immunogen | Recombinant fusion protein of human CTNNA2 (NP_004380.2). |
| GeneID | 1496 |
| Swissprot | P26232 |
| Synonyms | CTNNA2,CAP-R,CAPR,CT114,CTNR |

Product Information

| | |
|----------------------|---|
| Calculated MW | 59kDa/65kDa/95kDa/100kDa/104kDa/105kDa |
| Observed MW | 120kDa |
| Buffer | PBS with 0.02% sodium azide, 50% glycerol, pH7.3. |
| Purify | Affinity purification |
| Dilution | WB 1:200-1:2000 IHC 1:50-1:200 |

Background

CTNNA2 (Catenin Alpha 2) is a Protein Coding gene. Diseases associated with CTNNA2 include Cortical Dysplasia, Complex, With Other Brain Malformations 9 and Arrhythmogenic Right Ventricular Cardiomyopathy. Among its related pathways are Blood-Brain Barrier and Immune Cell Transmigration: VCAM-1/CD106 Signaling and Gastric cancer. Gene Ontology (GO) annotations related to this gene include structural molecule activity and structural constituent of cytoskeleton. An important paralog of this gene is CTNNA1.

For Research Use Only

Thank you for your recent purchase.
 If you would like to learn more about antibodies, please visit www.elabscience.com.

Focus on your research
Service for life science

Applications:WB-Western Blot IHC-Immunohistochemistry IF-Immunofluorescence IP-Immunoprecipitation FC-Flow cytometry ChIP-Chromatin Immunoprecipitation Reactivity: H-Human R-Rat M-Mouse Mk-Monkey Dg-Dog Ch-Chicken Hm-Hamster Rb-Rabbit Sh-Sheep Pg-Pig Z-Zebrafish X-Xenopus C-Cow.