

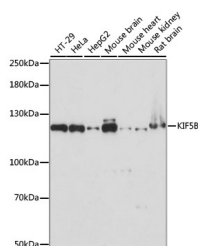
KIF5B Polyclonal Antibody

Catalog No. E-AB-65249
Storage Store at -20°C. Avoid freeze / thaw cycles.
Applications WB,IHC

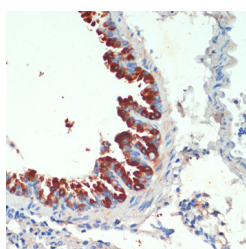
Reactivity H,M,R
Host Rabbit
Isotype IgG

Note: Centrifuge before opening to ensure complete recovery of vial contents.

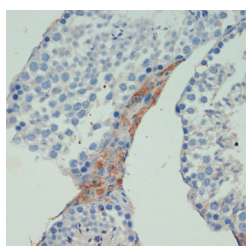
Images



Western blot analysis of extracts of various cell lines using KIF5B Polyclonal Antibody at dilution of 1:1000.



Immunohistochemistry of paraffin-embedded Mouse lung using KIF5B Polyclonal Antibody at dilution of 1:200 (40x lens).



Immunohistochemistry of paraffin-embedded Mouse testis using KIF5B Polyclonal Antibody at dilution of 1:200 (40x lens).

Immunogen Information

Immunogen Recombinant fusion protein of human KIF5B (NP_004512.1).
GeneID 3799
Swissprot P33176
Synonyms KIF5B,HEL-S-61,KINH,KNS,KNS1,UKHC

Product Information

Calculated MW 109kDa
Observed MW 110kDa
Buffer PBS with 0.02% sodium azide, 50% glycerol, pH7.3.
Purify Affinity purification
Dilution WB 1:500-1:2000 IHC 1:50-1:100

Background

KIF5B (Kinesin Family Member 5B) is a Protein Coding gene. Diseases associated with KIF5B include Pulmonary Large Cell Neuroendocrine Carcinoma and Occipital Lobe Neoplasm. Among its related pathways are Signaling by GPCR and RHO GTPases activate KTN1. Gene Ontology (GO) annotations related to this gene include ATPase activity and microtubule motor activity. An important paralog of this gene is KIF5C.

For Research Use Only

Thank you for your recent purchase.
If you would like to learn more about antibodies, please visit www.elabscience.com.

Focus on your research Service for life science

Applications:WB-Western Blot IHC-Immunohistochemistry IF-Immunofluorescence IP-Immunoprecipitation FC-Flow cytometry ChIP-Chromatin Immunoprecipitation Reactivity: H-Human R-Rat M-Mouse Mk-Monkey Dg-Dog Ch-Chicken Hm-Hamster Rb-Rabbit Sh-Sheep Pg-Pig Z-Zebrafish X-Xenopus C-Cow.