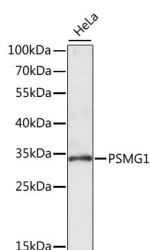


## PSMG1 Polyclonal Antibody

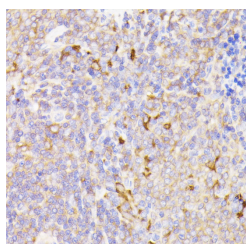
<b>Catalog No.</b>	E-AB-65271	<b>Reactivity</b>	H,M,R
<b>Storage</b>	Store at -20°C. Avoid freeze / thaw cycles.	<b>Host</b>	Rabbit
<b>Applications</b>	WB,IHC	<b>Isotype</b>	IgG

**Note:** Centrifuge before opening to ensure complete recovery of vial contents.

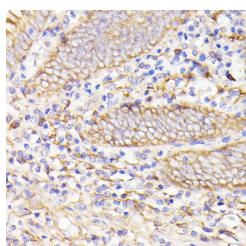
### Images



Western blot analysis of extracts of HeLa cells using PSMG1 Polyclonal Antibody at dilution of 1:1000.



Immunohistochemistry of paraffin-embedded Rat spleen using PSMG1 Polyclonal Antibody at dilution of 1:100 (40x lens).



Immunohistochemistry of paraffin-embedded Human appendix using PSMG1 Polyclonal Antibody at dilution of 1:100 (40x lens).

### Immunogen Information

<b>Immunogen</b>	Recombinant fusion protein of human PSMG1 (NP_003711.1).
<b>GeneID</b>	8624
<b>Swissprot</b>	O95456
<b>Synonyms</b>	PSMG1,C21LRP,DSCR2,LRPC21,PAC-1,PAC1

### Product Information

<b>Calculated MW</b>	30kDa/32kDa
<b>Observed MW</b>	33kDa
<b>Buffer</b>	PBS with 0.02% sodium azide, 50% glycerol, pH7.3.
<b>Purify</b>	Affinity purification
<b>Dilution</b>	WB 1:200-1:2000 IHC 1:50-1:200

### Background

PSMG1 (Proteasome Assembly Chaperone 1) is a Protein Coding gene. Diseases associated with PSMG1 include Down Syndrome and Thrombasthenia. Gene Ontology (GO) annotations related to this gene include proteasome binding.

#### For Research Use Only

Thank you for your recent purchase.  
 If you would like to learn more about antibodies, please visit [www.elabscience.com](http://www.elabscience.com).

**Focus on your research**  
**Service for life science**

Applications:WB-Western Blot IHC-Immunohistochemistry IF-Immunofluorescence IP-Immunoprecipitation FC-Flow cytometry ChIP-Chromatin Immunoprecipitation Reactivity: H-Human R-Rat M-Mouse Mk-Monkey Dg-Dog Ch-Chicken Hm-Hamster Rb-Rabbit Sh-Sheep Pg-Pig Z-Zebrafish X-Xenopus C-Cow.