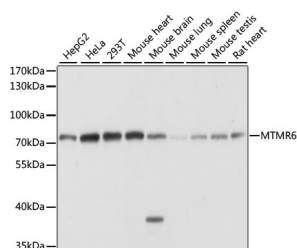


MTMR6 Polyclonal Antibody

Catalog No.	E-AB-65275	Reactivity	H,M,R
Storage	Store at -20°C. Avoid freeze / thaw cycles.	Host	Rabbit
Applications	WB	Isotype	IgG

Note: Centrifuge before opening to ensure complete recovery of vial contents.

Images



Western blot analysis of extracts of various cell lines using MTMR6 Polyclonal Antibody at dilution of 1:1000.

Immunogen Information

Immunogen	Recombinant fusion protein of human MTMR6 (NP_004676.3).
GeneID	9107
Swissprot	Q9Y217
Synonyms	MTMR6

Product Information

Calculated MW	63kDa/71kDa
Observed MW	72kDa
Buffer	PBS with 0.02% sodium azide, 50% glycerol, pH7.3.
Purify	Affinity purification
Dilution	WB 1:200-1:2000

Background

MTMR6 (Myotubularin Related Protein 6) is a Protein Coding gene. Diseases associated with MTMR6 include Myopathy, Centronuclear, X-Linked and Retinohepatoendocrinologic Syndrome. Among its related pathways are Inositol phosphate metabolism (KEGG) and PI Metabolism. Gene Ontology (GO) annotations related to this gene include phosphatase activity and protein serine/threonine phosphatase activity. An important paralog of this gene is MTMR7.

For Research Use Only

Thank you for your recent purchase.
 If you would like to learn more about antibodies, please visit www.elabscience.com.

**Focus on your research
 Service for life science**

Applications: WB-Western Blot IHC-Immunohistochemistry IF-Immunofluorescence IP-Immunoprecipitation FC-Flow cytometry ChIP-Chromatin Immunoprecipitation Reactivity: H-Human R-Rat M-Mouse Mk-Monkey Dg-Dog Ch-Chicken Hm-Hamster Rb-Rabbit Sh-Sheep Pg-Pig Z-Zebrafish X-Xenopus C-Cow.