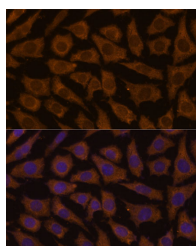


## MTMR4 Polyclonal Antibody

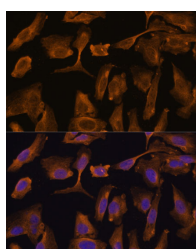
<b>Catalog No.</b>	E-AB-65276	<b>Reactivity</b>	H,M,R
<b>Storage</b>	Store at -20°C. Avoid freeze / thaw cycles.	<b>Host</b>	Rabbit
<b>Applications</b>	IF	<b>Isotype</b>	IgG

**Note:** Centrifuge before opening to ensure complete recovery of vial contents.

### Images



Immunofluorescence analysis of L929 cells using MTMR4 Polyclonal Antibody at dilution of 1:100 (40x lens). Blue: DAPI for nuclear staining.



Immunofluorescence analysis of U-2 OS cells using MTMR4 Polyclonal Antibody at dilution of 1:100 (40x lens). Blue: DAPI for nuclear staining.

### Immunogen Information

<b>Immunogen</b>	Recombinant fusion protein of human MTMR4 (NP_004678.3).
<b>GeneID</b>	9110
<b>Swissprot</b>	Q9NYA4
<b>Synonyms</b>	MTMR4,FYVE-DSP2,ZFYVE11

### Product Information

<b>Buffer</b>	PBS with 0.02% sodium azide, 50% glycerol, pH7.3.
<b>Purify</b>	Affinity purification
<b>Dilution</b>	IF 1:50-1:200

### Background

MTMR4 (Myotubularin Related Protein 4) is a Protein Coding gene. Diseases associated with MTMR4 include Mulibrey Nanism and Myopathy, Centronuclear, X-Linked. Among its related pathways are Signaling by GPCR and Inositol phosphate metabolism (KEGG). Gene Ontology (GO) annotations related to this gene include phosphatase activity and protein serine/threonine phosphatase activity. An important paralog of this gene is MTMR3.

#### For Research Use Only

Thank you for your recent purchase.  
If you would like to learn more about antibodies, please visit [www.elabscience.com](http://www.elabscience.com).

#### Focus on your research Service for life science

Applications: WB-Western Blot IHC-Immunohistochemistry IF-Immunofluorescence IP-Immunoprecipitation FC-Flow cytometry ChIP-Chromatin Immunoprecipitation Reactivity: H-Human R-Rat M-Mouse Mk-Monkey Dg-Dog Ch-Chicken Hm-Hamster Rb-Rabbit Sh-Sheep Pg-Pig Z-Zebrafish X-Xenopus C-Cow.