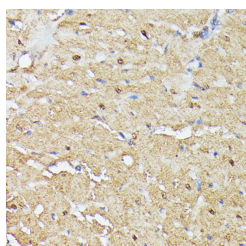


## TRIP4 Polyclonal Antibody

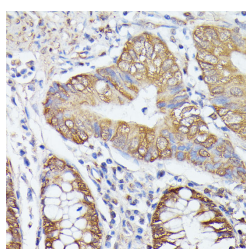
<b>Catalog No.</b>	E-AB-65278	<b>Reactivity</b>	H,M,R
<b>Storage</b>	Store at -20°C. Avoid freeze / thaw cycles.	<b>Host</b>	Rabbit
<b>Applications</b>	IHC	<b>Isotype</b>	IgG

**Note:** Centrifuge before opening to ensure complete recovery of vial contents.

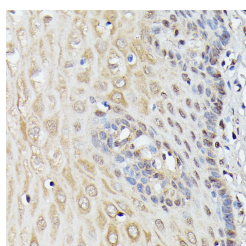
### Images



Immunohistochemistry of paraffin-embedded Rat heart using TRIP4 Polyclonal Antibody at dilution of 1:100 (40x lens).



Immunohistochemistry of paraffin-embedded Human colon carcinoma using TRIP4 Polyclonal Antibody at dilution of 1:100 (40x lens).



Immunohistochemistry of paraffin-embedded Human esophageal using TRIP4 Polyclonal Antibody at dilution of 1:100 (40x lens).

### Immunogen Information

<b>Immunogen</b>	Recombinant fusion protein of human TRIP4 (NP_057297.2).
<b>GeneID</b>	9325
<b>Swissprot</b>	Q15650
<b>Synonyms</b>	TRIP4,ASC-1,ASC1,HsT17391,MDCDC,SMABF1,ZC2HC5

### Product Information

<b>Buffer</b>	PBS with 0.02% sodium azide, 50% glycerol, pH7.3.
<b>Purify</b>	Affinity purification
<b>Dilution</b>	IHC 1:50-1:200

### Background

This gene encodes a subunit of the tetrameric nuclear activating signal cointegrator 1 (ASC-1) complex, which associates with transcriptional coactivators, nuclear receptors and basal transcription factors to facilitate nuclear receptors-mediated transcription. This protein is localized in the nucleus and contains an E1A-type zinc finger domain, which mediates interaction with transcriptional coactivators and ligand-bound nuclear receptors, such as thyroid hormone receptor and retinoid X receptor alpha, but not glucocorticoid receptor. Mutations in this gene are associated with spinal muscular atrophy with congenital bone fractures-1 (SMABF1).

### For Research Use Only

Thank you for your recent purchase.  
If you would like to learn more about antibodies, please visit [www.elabscience.com](http://www.elabscience.com).

### Focus on your research Service for life science

Applications:WB-Western Blot IHC-Immunohistochemistry IF-Immunofluorescence IP-Immunoprecipitation FC-Flow cytometry ChIP-Chromatin Immunoprecipitation Reactivity: H-Human R-Rat M-Mouse Mk-Monkey Dg-Dog Ch-Chicken Hm-Hamster Rb-Rabbit Sh-Sheep Pg-Pig Z-Zebrafish X-Xenopus C-Cow.